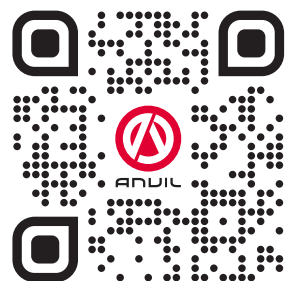




ANVIL

Installation, Operation and Care Manual

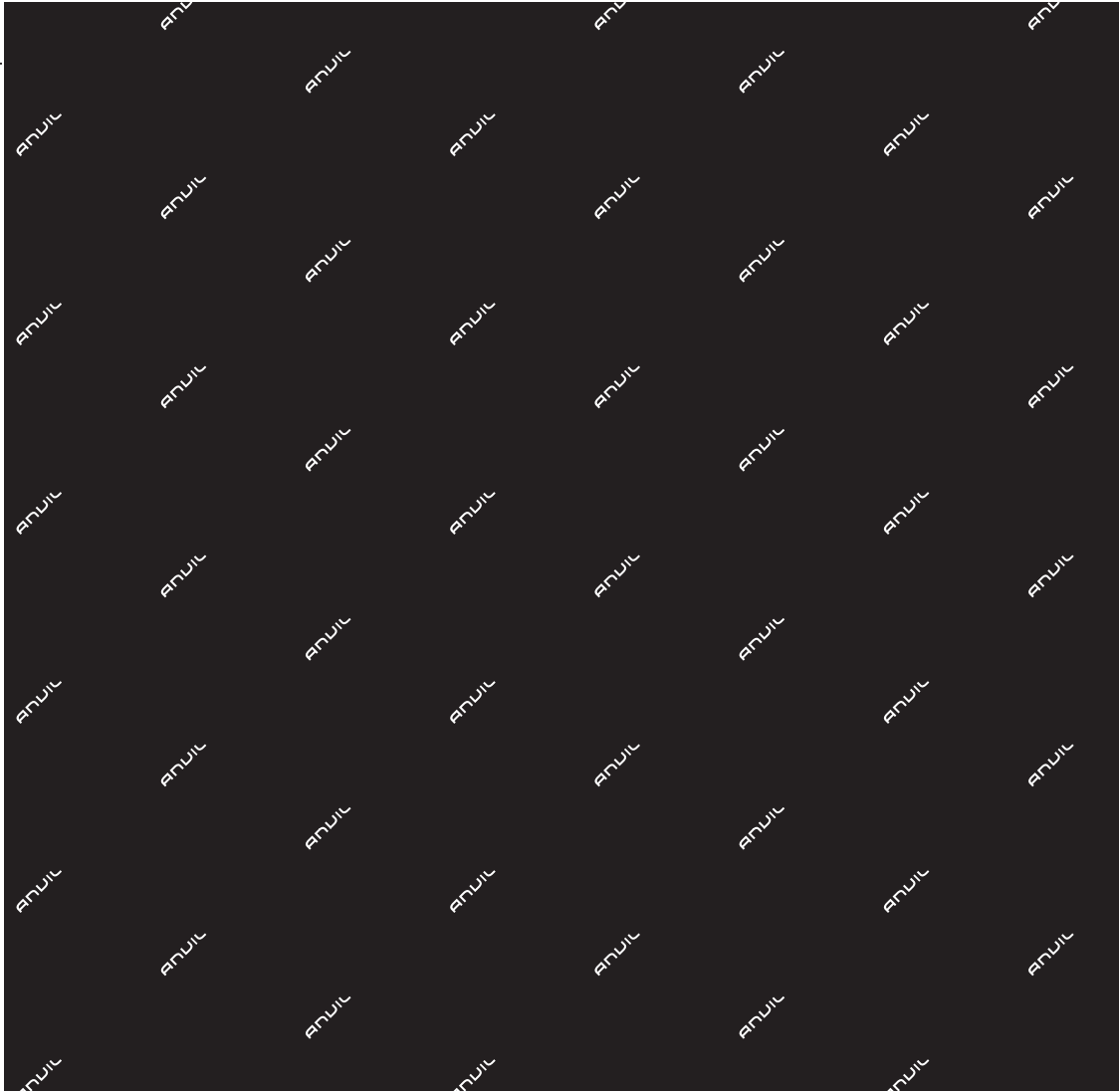


SCAN ME
TO GO TO
WARRANTY
REGISTRATION

MANUFACTURING
SINCE 1966

4-INS-PWK0002

THE CHEFS COMPANION



THE CHEFS COMPANION



THANK YOU FOR PURCHASING AN ANVIL PRODUCT!



REGISTER ONLINE TODAY

Register your warranty on-line at www.anvilworld.com today and learn how to get the best out of your Anvil product, tips to care for your Anvil product for long lasting performance, exciting recipes and more.

NO WEB ACCESS?

If you do not have access to the Web, register by completing this form and faxing it to the Anvil head office in South Africa. Fax: +27 11 474 1630

ONLY COMPLETE IF YOU DO NOT HAVE WEB ACCESS

Company _____

Name _____

Surname _____

Telephone _____

Cellphone _____

Email Address _____

Country _____

Postal address _____

Anvil products purchased _____

Code (see box label) _____

Serial number (see back of machine) _____

INTENDED USE

- | | |
|--|--|
| <input type="checkbox"/> Full-Service restaurant | <input type="checkbox"/> Institutional Cafeteria |
| <input type="checkbox"/> Coffee Shop / Deli | <input type="checkbox"/> Corporate Catering |
| <input type="checkbox"/> Fast Food Outlet | <input type="checkbox"/> Private Use |
| <input type="checkbox"/> Hotel | <input type="checkbox"/> Franchisor |
| <input type="checkbox"/> Bed & Breakfast | <input type="checkbox"/> Convenience Store |
| <input type="checkbox"/> School Cafeteria | <input type="checkbox"/> Other |

 ALL ANVIL EQUIPMENT COMES WITH A TWO YEAR WARRANTY ON COMPONENTS AND DEFECTIVE WORKMANSHIP.

www.anvilworld.com

LIMITED WARRANTY

All equipment which is sold under ANVIL trademark and used for commercial purposes is warranted against defects in materials and workmanship. The warranty runs for two years from the date of original installation and is for the benefit of the original purchaser only. All other Warranties ,expressed or implied , statutory or otherwise, including without limitations any implied Warranty of Merchantability or fitness for purpose are excluded .The Seller shall in no event be liable for direct,indirect or consequential damages in connection with ANVIL commercial products.

The Sellers obligation under this Warranty is limited to the repair of defects without charge. Defective units must be taken or shipped,transportation charges prepaid,to ANVIL.

This Warranty is not effective if damage occurs because of accident, carelessness, improper installation, lack of proper set-up, supervision when required or if the equipment is installed or operated in any manner contrary to the installation and operating instructions. In these cases, repairs will be made at a reasonable cost. Work performed by unauthorized personnel or unauthorized service agencies using non Anvil spares voids this Warranty.



NB:

REGISTER ON-LINE TODAY

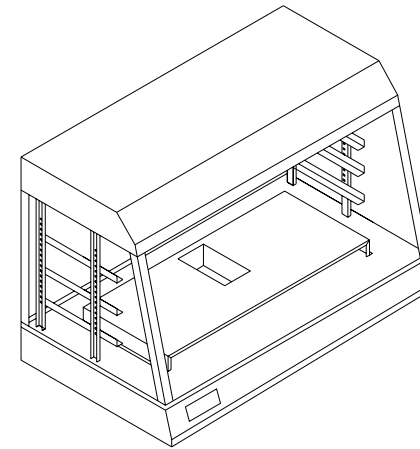
Register your warranty on-line now at www.anvilworld.com

NO WEB ACCESS

If you do not have access to the Web. Kindly register by completing the warranty registration form and fax it to the ANVIL office in the country of purchase.

Failure to do so will invalidate your warranty.

DISPLAY MERCHANDISER



**INSTALLATION OPERATION AND CARE OF
DISPLAY MERCHANDISER
MODEL:PWK0002 R01/PWK0003 R01/PWK0006 R01**

UNPACKING

Unpack the product and check for any damage incurred during transit. This should be reported to the responsible carrier, railway or postal authority, and a request for a damage report should be made.



THESE INSTRUCTIONS MUST BE FOLLOWED FOR US TO GUARANTEE OUR FULL SUPPORT OF YOUR CLAIM FOR PROTECTING AGAINST LOSS FROM CONCEALED DAMAGE. THE FORM FOR FILING SUCH A CLAIM WILL BE PROVIDED BY THE CARRIER.

GENERAL INSTALLATION AND OPERATION INSTRUCTIONS

1. This unit has been designed for counter top display of food such as pies and quiches. The heater system ensures that the products placed inside can be stored and served at the correct temperature and humidity. An internal lighting system enhances the products displayed.
2. Assemble the shelving system and fit the front and rear sliding doors as indicated below:

Glass sliding Doors

The unit has front and rear sliding doors. When unpacking, note that the longer doors fit at the front / sloped section. The doors are fitted by placing the door into the channel in the top section of the unit first, pushing the glass far enough up to enable the bottom of the door to clear the bottom channel and drop down into position in the corresponding bottom channel. There are two channels which allow the glass doors to slide past one another. Ensure that the handles are toward the outside of the unit. Fit the rear doors in the same manner. There are two plastic blocks supplied, which if placed in the bottom channels in front of the glass will prevent the doors from opening.

MODEL:DISPLAY MERCHANDISER
MODEL CODE : PWK0006

Part No.	Description
1	HEATING ELEMENT - PIE WARMER 900 MODEL
2	SPARE SHELF - PIE WARMER 900 MODEL - LARGE
3	INDICATING THERMOMETER
4	THERMO 30-110
5	CABLE GLAND
6	TEMPERATURE CONTROL KNOB BLACK
8	NEON LIGHT RED 120V
9	CONTROL PANEL INSERT - 1 HOLE
10	CONTROL PANEL FACIA
11	SINGLE TRAY (DRIP TRAY)
12	600MM PIE WARMER SIDE GLASS TEMPERED
13	900MM MS PIE WARMER REAR RIGHT
14	900MM MS PIE WARMER GLASS REAR LEFT
15	900MM MS PIE WARMER GLASS FRONT LEFT
16	900MM MS PIE WARMER GLASS FRONT RIGHT
17	600MM MS PIE WARMER SHELF RUNNER SUPPORT
18	600MM MS PIE WARMER SHELF RUNNER
19	WARM WHITE LIGHT BULB FOR PWK0002/3
20	LIGHT BULB HOLDER FOR PMK0001
21	LIGHT DIFFUSER FOR PMK0001
22	RUBBER FOOT
23	11W BALLAST FOR PWK0002 & PWK0003
24	STARTER HOLDER FOR IEA0660
25	STARTER FOR IEA0660
26	SPARE SHELF - PIE WARMER 900 MODEL - MEDIUM
27	SPARE SHELF - PIE WARMER 900 MODEL - SMALL
28	PWER CORD
29	ANVIL STICK ON LOGO

Shelving system

There are four upright channels which locate into slots provided inside the unit .The channels have a flat tab at each end the top side is slightly longer. Place the channel vertically into the slot provided in the top of the unit and then drop down to fit through the corresponding slot in the bottom. Ensure that flat sides are facing inside the unit. The shelf support angles fit into the slots in the upright channel. They can be positioned level or sloping forward according to preference. The wire shelf is positioned on top of the support angle and fits against the securing tab at the rear of the support angle which prevents the shelf from sliding forward.

3. Install the unit in the most convenient location for the ease of cleaning,maintenance and point of sale of display.
4. Set the temperature to the desired value. The red pilot light will indicate when the heating element is energized. The front mounting temperature indicator gives a visual indication of the actual internal temperature.
5. It is advisable to load the shelves evenly with air gaps around the products to ensure even heat distribution.



Plastic block for sliding door



Upright Location



Shelf support angles



Shelf support angle



Wire shelf location

SPECIFIC OPERATING INSTRUCTIONS

1. The unit is provided with a small humidity pan and mounted in the internal bottom plate. Should humidity be required this pan must be filled with 500 ml of water and the level must be monitored on a regular basis.
2. The panel mounted rocker switch operates the front display lights and can be used when required.

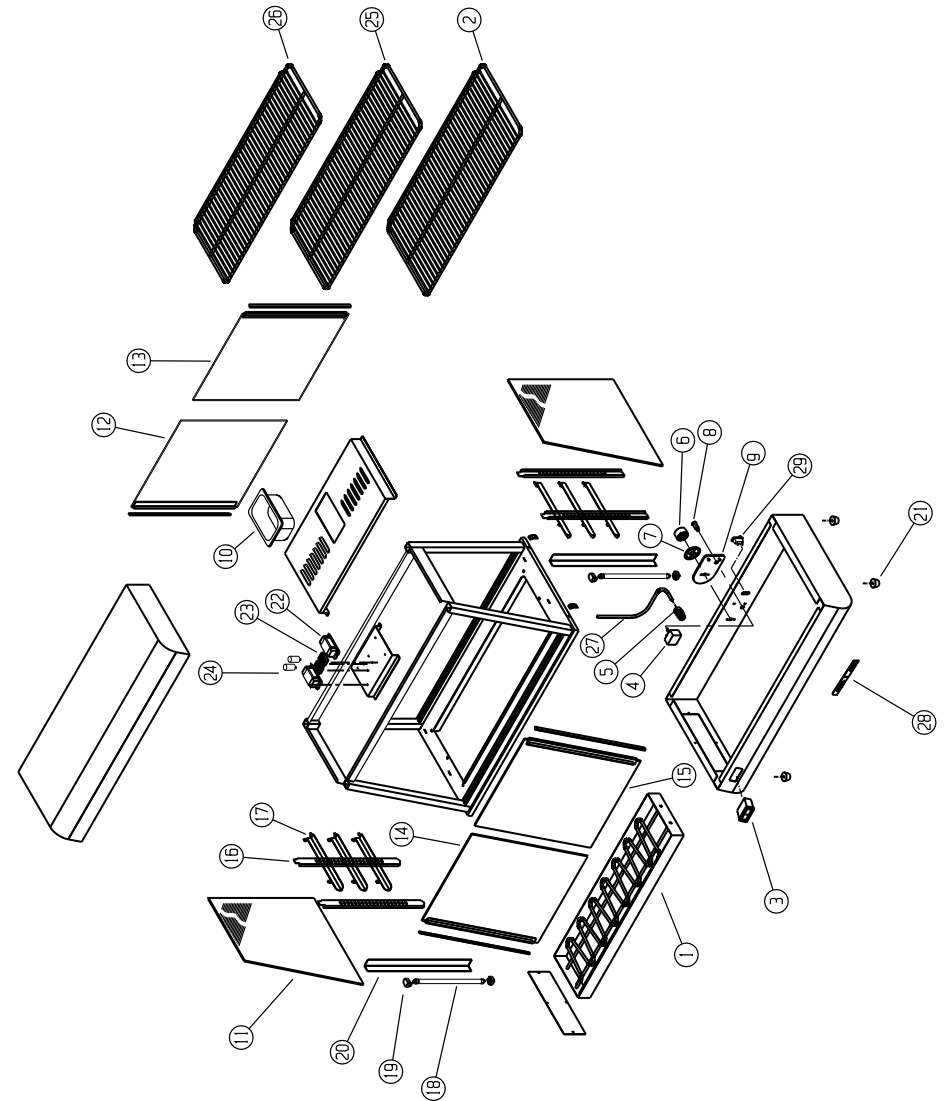
ELECTRICAL CONNECTION INFORMATION

MODEL	DESCRIPTION	VOLTS (V/Hz)	POWER (W)
PWK0002	DISPLAY MERCHANDISER 600mm	240V/50Hz	1840
PWK0003	DISPLAY MERCHANDISER 900mm	240V/50Hz	1840
PWK0006	DISPLAY MERCHANDISER 1200mm	240V/50Hz	2200



IT IS ESSENTIAL TO MAKE SURE THAT THE INCOMING VOLTAGE IS THE SAME AS THE RATED VOLTAGE OF THE OF THE UNIT AS FOUND ON THE SERIAL PLATE. THE SERIAL PLATE IS LOCATED AT THE REAR OF THE UNIT ADJACENT TO THE INCOMING CABLE ENTRY.

EXPLODED DIAGRAM DISPLAY MERCHANDISER MODEL:PWK0006 R01 (1200mm)



MODEL:DISPLAY MERCHANDISER
MODEL CODE : PWK0003

Part No.	Description
1	HEATING ELEMENT - PIE WARMER 900 MODEL
2	SPARE SHELF - PIE WARMER 900 MODEL - LARGE
3	INDICATING THERMOMETER
4	THERMO 30-110
5	CABLE GLAND
6	TEMPERATURE CONTROL KNOB BLACK
8	NEON LIGHT RED 120V
9	CONTROL PANEL INSERT - 1 HOLE
10	CONTROL PANEL FACIA
11	SINGLE TRAY (DRIP TRAY)
12	600MM PIE WARMER SIDE GLASS TEMPERED
13	900MM MS PIE WARMER REAR RIGHT
14	900MM MS PIE WARMER GLASS REAR LEFT
15	900MM MS PIE WARMER GLASS FRONT LEFT
16	900MM MS PIE WARMER GLASS FRONT RIGHT
17	600MM MS PIE WARMER SHELF RUNNER SUPPORT
18	600MM MS PIE WARMER SHELF RUNNER
19	WARM WHITE LIGHT BULB FOR PWK0002/3
20	LIGHT BULB HOLDER FOR PMK0001
21	LIGHT DIFFUSER FOR PMK0001
22	RUBBER FOOT
23	11W BALLAST FOR PWK0002 & PWK0003
24	STARTER HOLDER FOR IEA0660
25	STARTER FOR IEA0660
26	SPARE SHELF - PIE WARMER 900 MODEL - MEDIUM
27	SPARE SHELF - PIE WARMER 900 MODEL - SMALL
28	POWER CORD
29	ANVIL STICK ON LOGO



WARNING

Burn Hazard.

Do not touch hot food, liquid or heating surfaces while equipment is heating or operating

Hot surfaces and food can burn skin. Allow the hot surfaces to cool before handling

CLEANING

1. Always ensure that the unit is disconnected from the mains power supply before cleaning
2. This appliance should not be cleaned with a water jet or immersed in water. Use only a damp cloth or sponge dipped in soapy water.
3. Wipe off the unit with a dry cloth and wait at least half an hour before re - connecting to the mains outlet.



THIS APPLIANCE SHOULD NOT BE CLEANED WITH A WATER JET OR IMMERSSED IN WATER. USE ONLY A DAMP CLOTH OR SPONGE DIPPED IN SOAPY WATER. DO NOT USE STEEL-WOOL WHICH WILL MARK THE BRIGHT STAINLESS STEEL FINISH



WARNING

Electric Shock Hazard.

Keep water and other liquids from entering the inside of the equipment. Liquid inside the equipment could cause an electrical shock

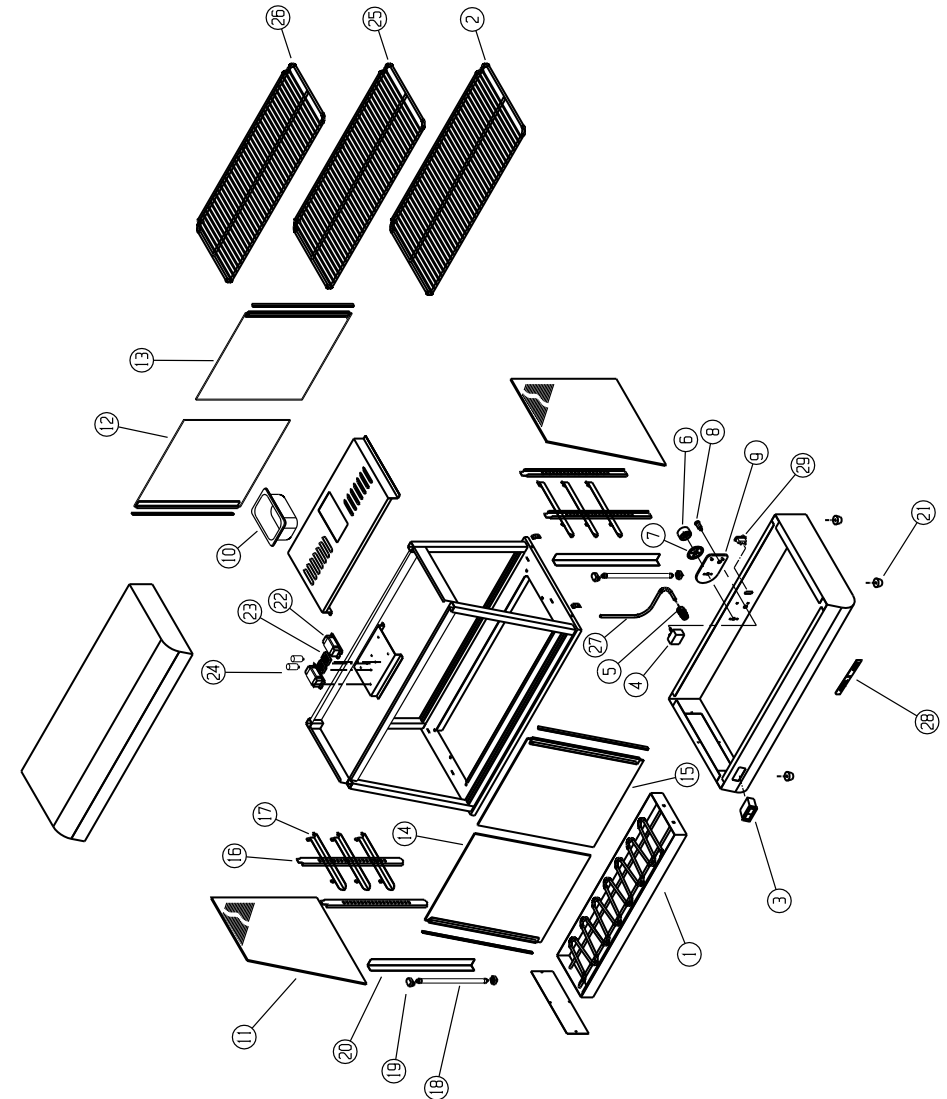
Do not spray water or cleaning products. Liquid could contact the electrical components and cause a short circuit or an electrical shock. Do not use equipment if power cord is damaged or has been modified

SAFETY

READ ALL INSTRUCTIONS BEFORE USE. FAILURE TO FOLLOW THESE PRECAUTIONS COULD RESULT IN INJURY TO YOURSELF AND OTHERS

1. When this appliances is to be positioned in close proximity to a wall, partitions, kitchen furniture, decorative finishes, etc. it is recommended that they be made of non-combustible material. If not, they shall be clad with a suitable non-combustible heat insulating material, and the closest attention be paid to fire prevention regulations.
2. Use the appliances on an individual 15A mains outlet only.
DO NOT OVERLOAD THE CIRCUIT.
3. Ensure that the equipment and the power supply cord does not come into contact with hot surfaces.
4. Supervision is necessary when the appliance is used in close proximity to children.
5. If the supply cord is damaged, it must be replaced with a new cord assembly available from the suppliers agent.
6. Use only earthed outlets matching the serial plate voltage.
7. Have equipment installed by a qualified personnel in accordance with local codes and ordinances.
8. Use equipment in a flat level position.
9. Do not operate unattended
10. The equipment may be hot, even though the pilot light is not on.
11. Do not operate if equipment has been damaged or is malfunctioning in any way.
12. These appliances are designed to run only on alternating current (A.C.) **DO NOT CONNECT TO DIRECT CURRENT (D.C)**

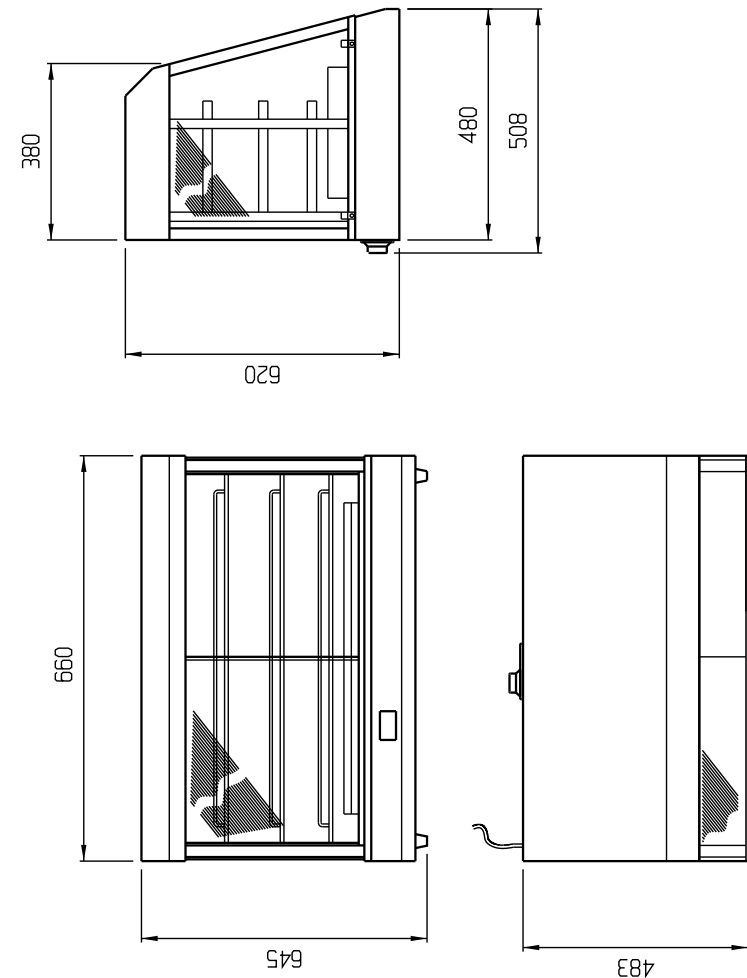
EXPLODED DIAGRAM DISPLAY MERCHANDISER MODEL:PWK0003 R01 (900mm)



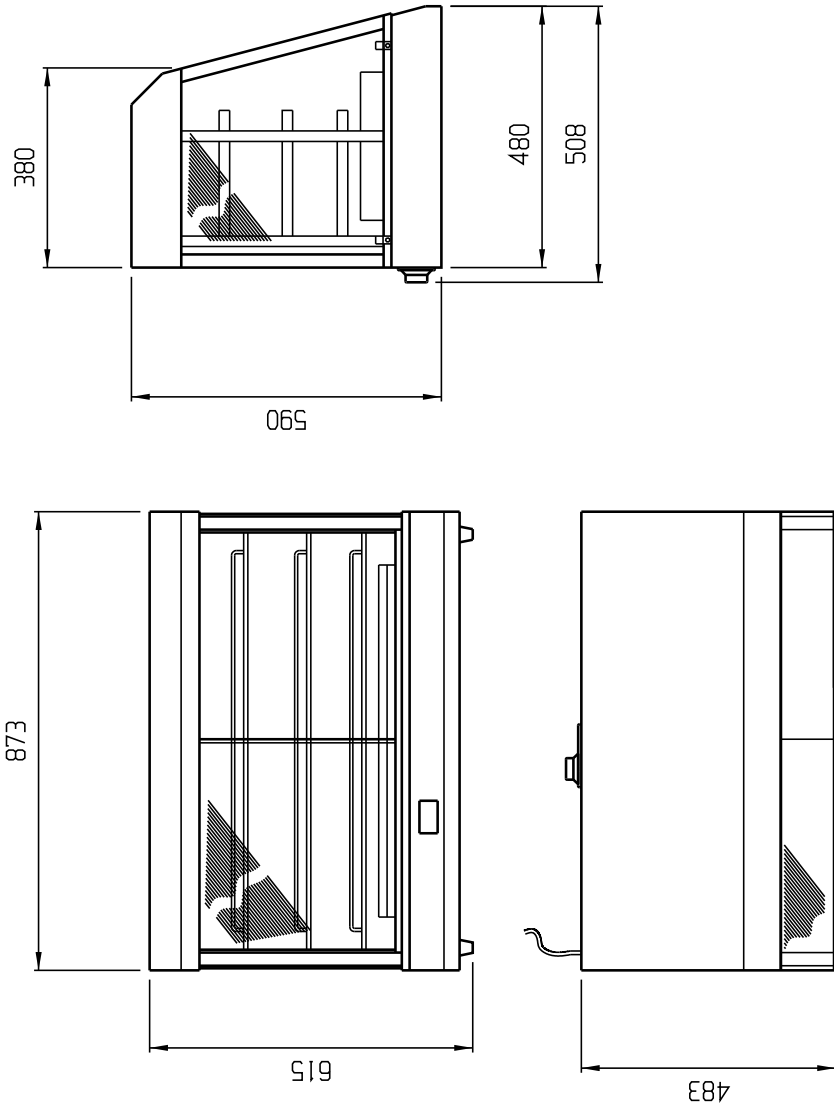
MODEL:DISPLAY MERCHANDISER
MODEL CODE : PWK0002

Part No.	Description
1	HEATING ELEMENT - PIE WARMER 600 MODEL
2	SPARE SHELF - PIE WARMER 600 MODEL - LARGE
3	INDICATING THERMOMETER
4	THERMO 30-110
5	CABLE GLAND
6	TEMPERATURE CONTROL KNOB BLACK
8	NEON LIGHT RED 120V
9	CONTROL PANEL INSERT - 1 HOLE
10	CONTROL PANEL FACIA
11	SINGLE TRAY (DRIP TRAY)
12	600MM PIE WARMER SIDE GLASS TEMPERED
13	600MM MS PIE WARMER REAR GLASS TEMPERED RIGHT
14	600MM MS PIE WARMER REAR GLASS TEMPERED LEFT
15	600MM MS PIE WARMER SHELF RUNNER SUPPORT
16	600MM MS PIE WARMER SHELF RUNNER
17	600MM MS PIE WARMER GLASS DOOR TEMPERED FRONT
18	WARM WHITE LIGHT BULB FOR PWK0002/3
19	HOLDER FOR PMK0001
20	LIGHT DIFFUSER FOR PMK0001
21	ANVIL STICK ON LOGO
22	RUBBER FOOT
23	600MM MS PIE WARMER LEFT GLASS TEMPERED FRONT
24	11W BALLAST FOR PWK0002 & PWK0003
25	STARTER HOLDER FOR IEA0660
26	STARTER FOR IEA0660
27	POWER CORD
28	SPARE SHELF - PIE WARMER 600 MODEL - MEDIUM
29	SPARE SHELF - PIE WARMER 600 MODEL - SMALL

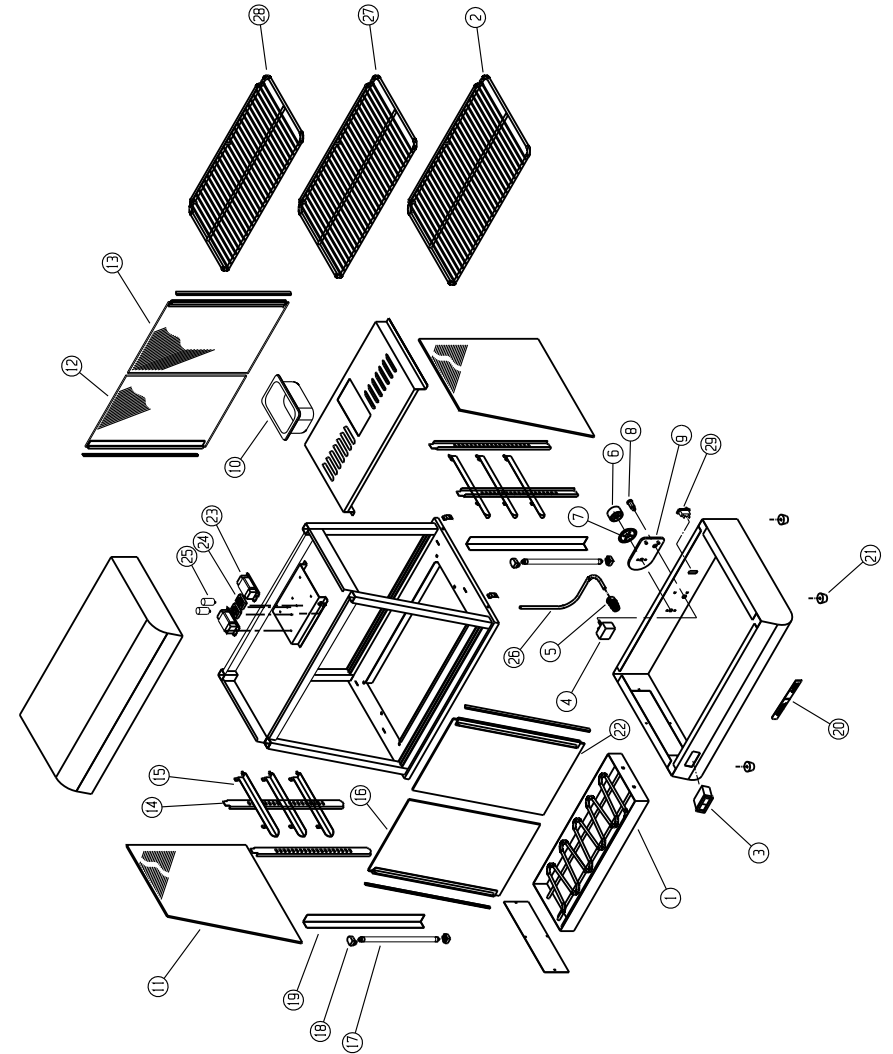
POSITIONING DIAGRAM
DISPLAY MERCHANDISER
MODEL:PWK0002 R01 (600mm)



**POSITIONING DIAGRAM
DISPLAY MERCHANDISER
MODEL:PWK0003 R01 (900mm)**

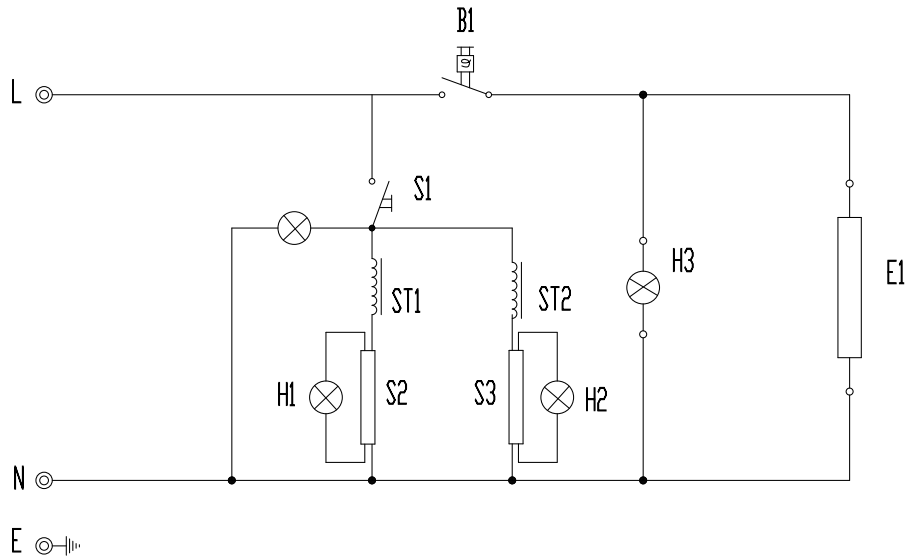


**EXPLODED DIAGRAM
DISPLAY MERCHANDISER
MODEL:PWK0002 R01 (600mm)**

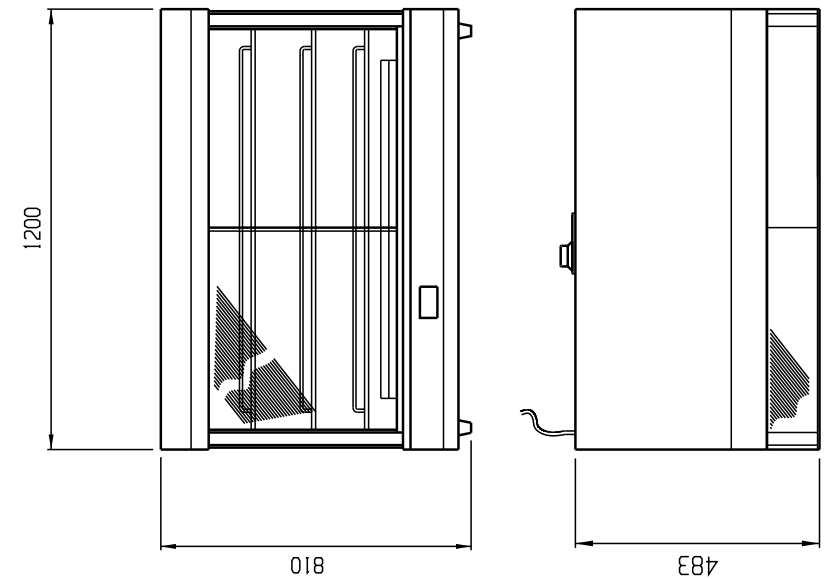
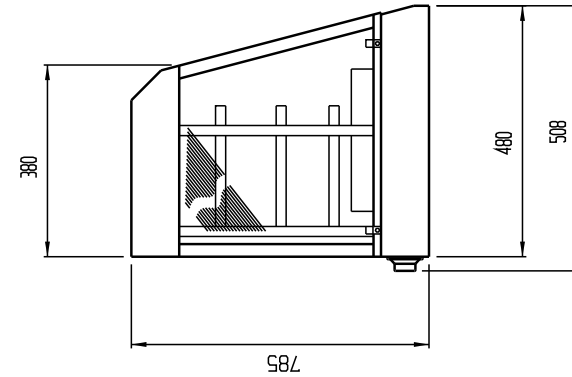


**WIRING DIAGRAM
DISPLAY MERCHANDISER
MODEL CODE: PWK0006 R01 (1200)**

LEGEND	DESCRIPTION	PART NUMBER
B1	CONTROL THERMOSTAT	1-EGO-50
S1	ILLUMINATED MAIN SWITCH	1-17TAF
S2/S3	BALLAST	1-BAL-PWK0002
E1	ELEMENT 1840W/240V	5-1840W-PWK0002
H1/H2	INTERIOR LIGHT	1-LB-BMA0001
ST1/ST2	LIGHT STARTER	1-ST-IEA0660
H3	PILOT LIGHT	1-PL-BMA0001
E1	ELEMENT 2200/240V	5-2200-PWK0003

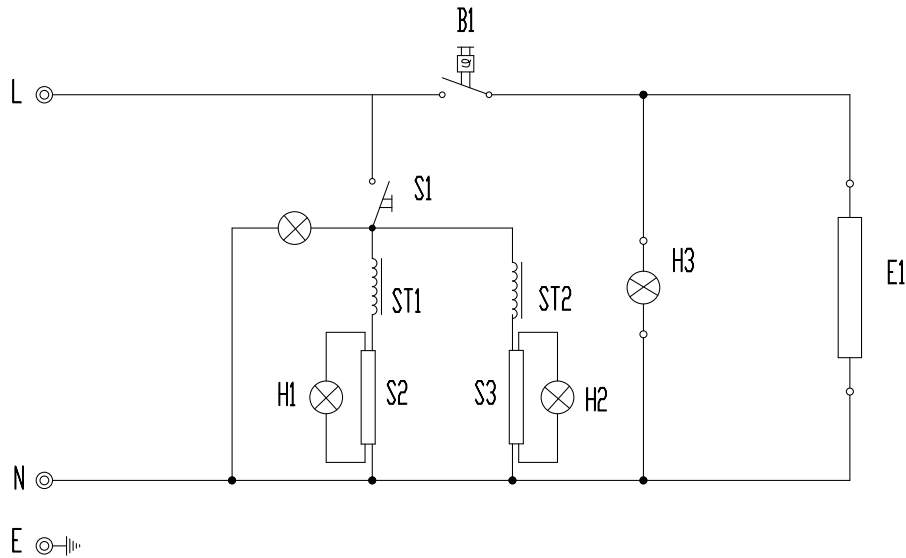


**POSITIONING DIAGRAM
DISPLAY MERCHANDISER
MODEL:PWK0006 R01 (1200mm)**



**WIRING DIAGRAM
DISPLAY MERCHANDISER
MODEL CODE: PWK0002 R01 (600)**

LEGEND	DESCRIPTION	PART NUMBER
B1	CONTROL THERMOSTAT	1-EGO-50
S1	ILLUMINATED MAIN SWITCH	1-17TAF
S2/S3	BALLAST	1-BAL-PWK0002
E1	ELEMENT 1840W/240V	5-1840W-PWK0002
H1/H2	INTERIOR LIGHT	1-LB-BMA0001
ST1/ST2	LIGHT STARTER	1-ST-IEA0660
H3	PILOT LIGHT	1-PL-BMA0001



**WIRING DIAGRAM
DISPLAY MERCHANDISER
MODEL CODE: PWK0003 R01 (900)**

LEGEND	DESCRIPTION	PART NUMBER
B1	CONTROL THERMOSTAT	1-EGO-50
S1	ILLUMINATED MAIN SWITCH	1-17TAF
S2/S3	BALLAST	1-BAL-PWK0002
E1	ELEMENT 1840W/240V	5-1840W-PWK0002
H1/H2	INTERIOR LIGHT	1-LB-BMA0001
ST1/ST2	LIGHT STARTER	1-ST-IEA0660
H3	PILOT LIGHT	1-PL-BMA0001
E1	ELEMENT 1840/240V	5-1840-PWK0003

