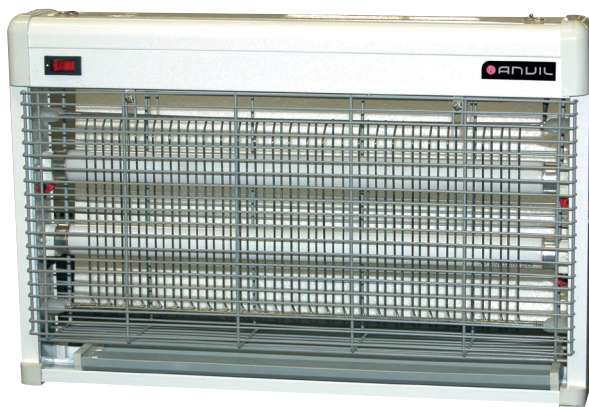


INSECT EXTERMINATOR

MANUFACTURING
SINCE 1966



Model: IEA1002



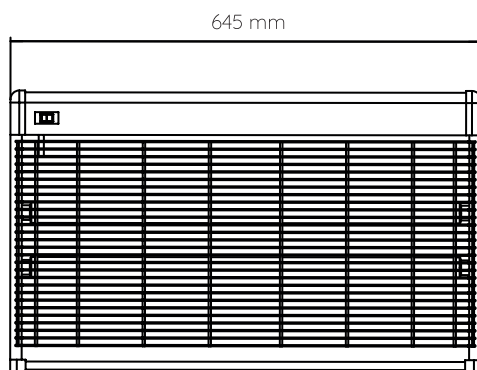
FEATURES

- 2 x 20W high attraction black light fluorescent tubes
- 3200V High voltage electroplated exterminator grids
- Anodised aluminium finish
- Removable insect tray for easy cleaning
- Supplied with installation kit for hanging from ceiling
- Coverage approximately 50m²



ALL ANVIL EQUIPMENT COMES WITH A TWO YEAR WARRANTY ON COMPONENTS AND DEFECTIVE WORKMANSHIP.

www.anvilworld.com

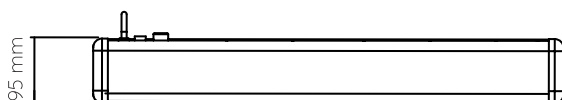
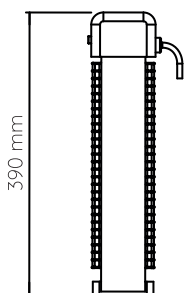
Model: IEA1002

SPECIFICATIONS

POWER	0.04kW
VOLTAGE	230V - 50Hz
PACKAGING (W x D x H)	725 x 165 x 450 (mm)
UNIT (W x D x H)	646 x 100 x 360 (mm)
NET WEIGHT	5kg
GROSS WEIGHT	6.3kg
SHIPPING VOLUME	0.05m ³
LAMPS	2 x 20W

AVAILABLE IN

 120V/60Hz

Note: Packaging refers to
3 units per box


NOTE

- When viewing the appliance from the front in its usual operating position, the width (W) of the product is the total distance from left to right; the depth (D) of the product is the total distance from the front to the back; the height (H) is the total distance from the bottom of the product to the top. Pictures may vary from actual product.

DISCLAIMER

- Output performance figures quoted are dependent on various factors. Anvil reserves the right, without notice, to make changes and revisions to product specifications, materials and design, when we believe it will provide better performance, durability, and efficiency. Unit measurements may vary depending on point of reference.



ALL ANVIL EQUIPMENT COMES WITH A TWO YEAR WARRANTY ON COMPONENTS AND DEFECTIVE WORKMANSHIP.

www.anvilworld.com