



ANVIL

Installation, Operation and Care Manual



SCAN ME
TO GO TO
WARRANTY
REGISTRATION

MANUFACTURING
SINCE 1966

4-INS-IEA1002

THE CHEFS COMPANION



THE CHEFS COMPANION



THANK YOU FOR PURCHASING
AN ANVIL PRODUCT!



REGISTER ONLINE TODAY

Register your warranty on-line at www.anvilworld.com today and learn how to get the best out of your Anvil product, tips to care for your Anvil product for long lasting performance, exciting recipes and more.

NO WEB ACCESS?

If you do not have access to the Web, register by completing this form and faxing it to the Anvil head office in South Africa. Fax: +27 11 474 1630

ONLY COMPLETE IF YOU DO NOT HAVE WEB ACCESS

Company _____

Name _____

Surname _____

Telephone _____

Cellphone _____

Email Address _____

Country _____

Postal address _____

Anvil products purchased _____

Code (see box label) _____

Serial number (see back of machine) _____

INTENDED USE

- | | |
|--|--|
| <input type="checkbox"/> Full-Service restaurant | <input type="checkbox"/> Institutional Cafeteria |
| <input type="checkbox"/> Coffee Shop / Deli | <input type="checkbox"/> Corporate Catering |
| <input type="checkbox"/> Fast Food Outlet | <input type="checkbox"/> Private Use |
| <input type="checkbox"/> Hotel | <input type="checkbox"/> Franchisor |
| <input type="checkbox"/> Bed & Breakfast | <input type="checkbox"/> Convenience Store |
| <input type="checkbox"/> School Cafeteria | <input type="checkbox"/> Other |



ALL ANVIL EQUIPMENT COMES WITH A TWO
YEAR WARRANTY ON COMPONENTS AND
DEFECTIVE WORKMANSHIP.

www.anvilworld.com

LIMITED WARRANTY

All equipment which is sold under ANVIL trademark and used for commercial purposes is warranted against defects in materials and workmanship. The warranty runs for two years from the date of original installation and is for the benefit of the original purchaser only. All other Warranties ,expressed or implied , statutory or otherwise, including without limitations any implied Warranty of Merchantability or fitness for purpose are excluded .The Seller shall in no event be liable for direct,indirect or consequential damages in connection with ANVIL commercial products.

The Sellers obligation under this Warranty is limited to the repair of defects without charge. Defective units must be taken or shipped,transportation charges prepaid,to ANVIL.

This Warranty is not effective if damage occurs because of accident,carelessness,improper installation,lack of proper set-up,supervision when required or if the equipment is installed or operated in any manner contrary to the installation and operating instructions. In these cases,repairs will be made at a reasonable cost. Work performed by unauthorized personnel or unauthorized service agencies using non Anvil spares voids this Warranty.



NB:

REGISTER ON-LINE TODAY

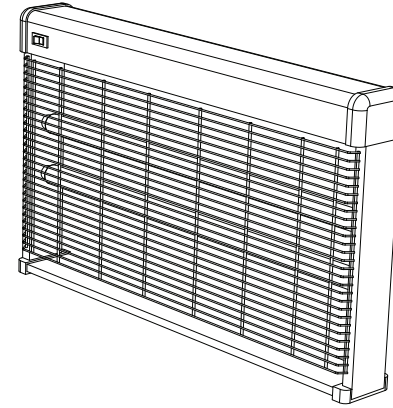
Register your warranty on-line now at www.anvilworld.com

NO WEB ACCESS

If you do not have access to the Web. Kindly register by completing the warranty registration form and fax it to the ANVIL office in the country of purchase.

Failure to do so will invalidate your warranty.

INSECT EXTERMINATOR



**INSTALLATION OPERATION AND CARE OF
INSECT EXTERMINATOR
MODELS: IEA1002 / IEA1002**

UNPACKING

1

10

Unpack the product and check for any damage incurred during transit. This should be reported to the responsible carrier, railway or postal authority, and a request for a damage report should be made.



THESE INSTRUCTIONS MUST BE FOLLOWED FOR US TO GUARANTEE OUR FULL SUPPORT OF YOUR CLAIM FOR PROTECTING AGAINST LOSS FROM CONCEALED DAMAGE. THE FORM FOR FILING SUCH A CLAIM WILL BE PROVIDED BY THE CARRIER.

GENERAL INSTALLATION AND OPERATION INSTRUCTIONS

1. Position the unit as high up as possible in the area required for most effective performance. The unit can be used free standing or mounted using the chains provided.
2. The unit has been designed to run continuously and is most effective in shady areas.
3. The unit uses high voltage to exterminate all forms of light sensitive insects and must only be used in area's that are protected from the elements.



THIS APPLIANCE SHOULD NOT BE CLEANED WITH A WATER JET OR IMMERSSED IN WATER. USE ONLY A DAMP CLOTH OR SPONGE DIPPED IN SOAPY WATER. DO NOT USE STEEL-WOOL WHICH WILL MARK THE BRIGHT STAINLESS STEEL FINISH

CLEANING

1. Always ensure that the unit is disconnected from the main power supply before cleaning.
2. This unit should not be cleaned with a water jet or immersed in water. Use only a damp cloth or sponge dipped in soapy water.
3. Wipe off the unit with a dry cloth and wait at least a half an hour before re-connecting to the main power outlet.
4. Clean out the collection tray frequently



WARNING

Electric Shock Hazard.

Keep water and other liquids from entering the inside of the equipment. Liquid inside the equipment could cause an electrical shock

Do not spray water or cleaning products. Liquid could contact the electrical components and cause a short circuit or an electrical shock. Do not use equipment if power cord is damaged or has been modified

SAFETY

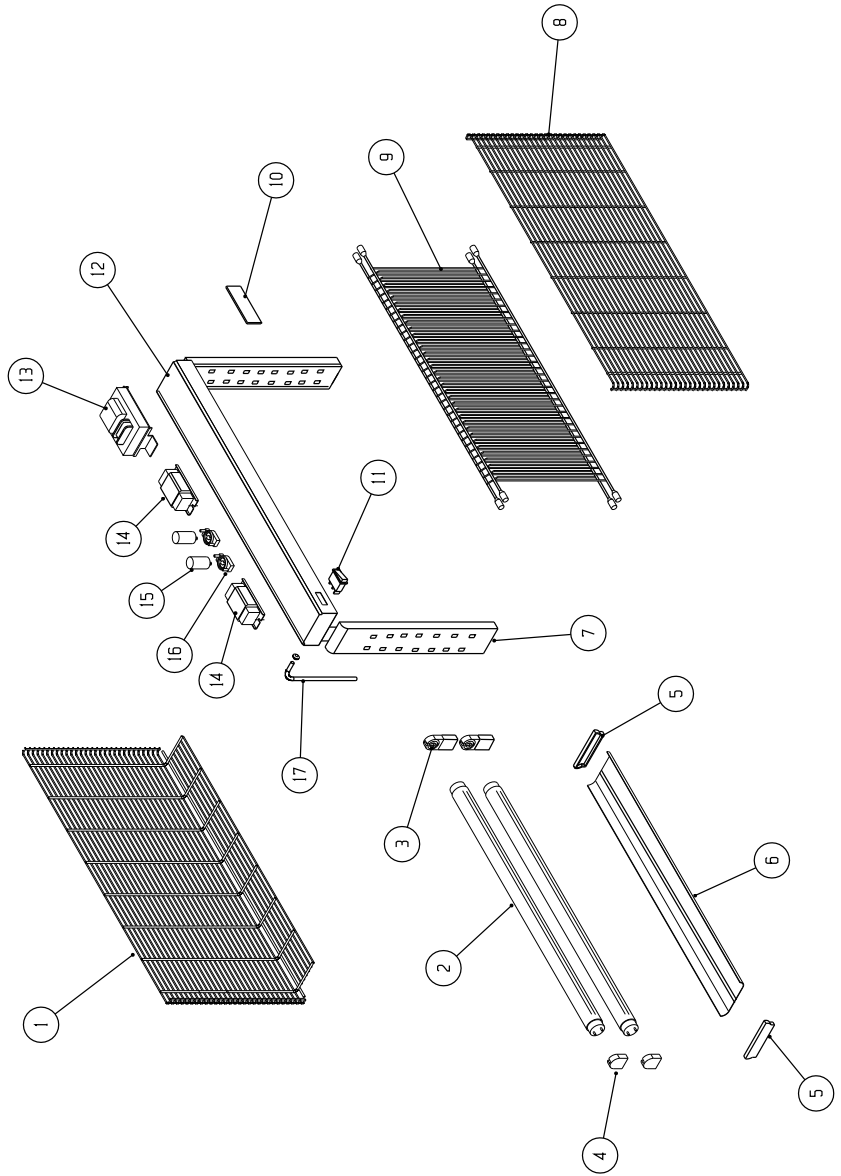
READ ALL INSTRUCTIONS BEFORE USE. FAILURE TO FOLLOW THESE PRECAUTIONS COULD RESULT IN INJURY TO YOURSELF AND OTHERS

1. Do not place objects or try to touch the inside grill while operating. There is a danger of high voltage electrical shock.
2. Use the insect exterminator on an individual 15A mains outlet only. **DO NOT OVERLOAD THE CIRCUIT.**
3. Ensure that the equipment and the power supply cord does not come into contact with hot surfaces.
4. Supervision is necessary when the appliance is used in close proximity to children.
5. This appliance is not to be used by persons (including children) with reduced physical, sensory or mental capabilities, or lack of experience and knowledge, unless they have been given supervision or instruction - children being supervised not to play with the appliance.
6. This appliance is for indoor use only and is not suitable for use in barns, stables and similar locations.
7. If the supply cord is damaged, it must be replaced with a new cord assembly available from the suppliers agent.
8. Use only earthed outlets matching the serial plate voltage.
9. Do not operate if equipment has been damaged or is malfunctioning in any way.
10. When using extension cords, keep the socket-outlet away from moisture and avoid damage to the cord.
11. These units are designed to run only on alternating current (A.C.) **DO NOT CONNECT TO DIRECT CURRENT (D.C)**

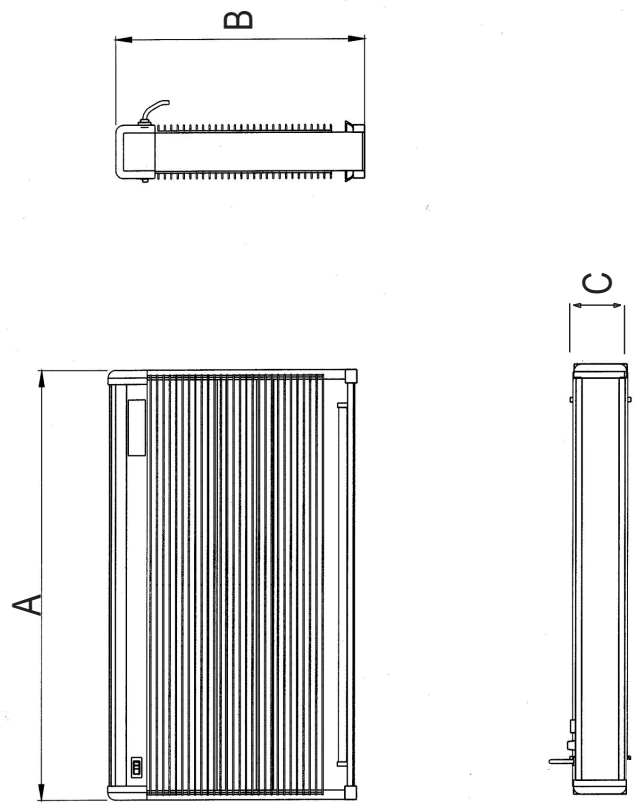
MODEL: INSECT EXTERMINATOR MODEL CODE: IEA1002

Part No.	Description
1	EXTERNAL WIRE GRID
2	BLACK LIGHT LAMP 10WATT
3	LIGHT BULB HOLDER
4	LIGHT BULB HOLDER
5	COLLECTION TRAY PLASTIC END CAPS
6	INSECT COLLECTION TRAY
7	PLASTIC END CAPS
8	EXTERNAL WIRE GRID
9	INTERNAL WIRE GRID
10	AVENIA LOGO
11	NON ILLUMINATED ROCKER SWITCH
12	OUTER ENCLOSURE
13	HIGH VOLTAGE TRANSFORMER
14	BALLAST 20WATT
15	STARTER
16	STARTER HOLDER
17	POWER CORD

**EXPLODED DIAGRAM
INSECT EXTERMINATOR
MODELS: IEA1002**



**POSITIONING DIAGRAM
INSECT EXTERMINATOR
MODELS: IEA1002**



PRODUCT CODE	A	B	C
IEA1002	645	365	100

ELECTRICAL CONNECTION INFORMATION

MODEL	DESCRIPTION	VOLTS (V/Hz)	POWER (W)
IEA1002	INSECT EXTERMINATOR	230/50	40



IT IS ESSENTIAL TO MAKE SURE THAT THE INCOMING VOLTAGE IS THE SAME AS THE RATED VOLTAGE OF THE OF THE UNIT AS FOUND ON THE SERIAL PLATE. THE SERIAL PLATE IS LOCATED AT THE REAR OF THE UNIT ADJACENT TO THE INCOMING CABLE ENTRY.



AN ELECTRIC SHOCK HAZARD MAY EXIST IF WATER FROM A GARDEN HOSE IS DIRECTED AT THE INSECT KILLER.

**WIRING DIAGRAM
INSECT EXTERMINATOR
MODEL CODE: IEA1002**

LEGEND	DESCRIPTION	PART NUMBER
SI	SWITCH	1-17TAF
B1/B2	20W BALLAST	1-BAL-IEA0660
ST1/ST2	LIGHT STARTER	1-230V-ST-IEA
L1/L2	LAMP BLACK LIGHT 20WATT	1-BL-IEA0660
TR1	HIGH VOLTAGE TRANSFORMER	1-TRA-IEA0660

