



ANVIL

Installation, Operation and Care Manual

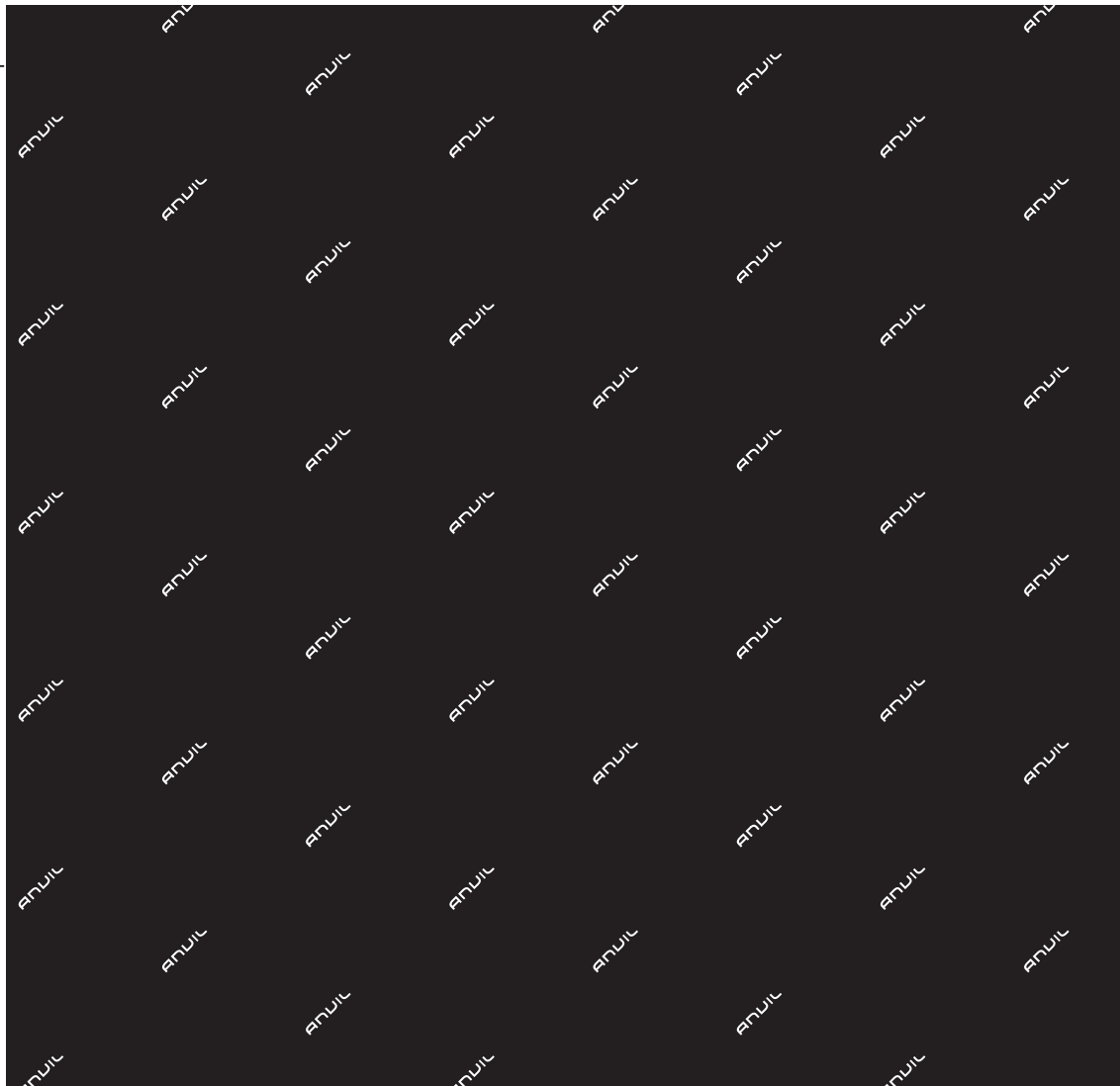


SCAN ME
TO GO TO
WARRANTY
REGISTRATION

MANUFACTURING
SINCE 1966

4-INS-DFC1900

THE CHEFS COMPANION



THE CHEFS COMPANION



THANK YOU FOR PURCHASING AN ANVIL PRODUCT!



REGISTER ONLINE TODAY

Register your warranty on-line at www.anvilworld.com today and learn how to get the best out of your Anvil product, tips to care for your Anvil product for long lasting performance, exciting recipes and more.

NO WEB ACCESS?

If you do not have access to the Web, register by completing this form and faxing it to the Anvil head office in South Africa. Fax: +27 11 474 1630

ONLY COMPLETE IF YOU DO NOT HAVE WEB ACCESS

Company _____

Name _____

Surname _____

Telephone _____

Cellphone _____

Email Address _____

Country _____

Postal address _____

Anvil products purchased _____

Code (see box label) _____

Serial number (see back of machine) _____

INTENDED USE

- | | |
|--|--|
| <input type="checkbox"/> Full-Service restaurant | <input type="checkbox"/> Institutional Cafeteria |
| <input type="checkbox"/> Coffee Shop / Deli | <input type="checkbox"/> Corporate Catering |
| <input type="checkbox"/> Fast Food Outlet | <input type="checkbox"/> Private Use |
| <input type="checkbox"/> Hotel | <input type="checkbox"/> Franchisor |
| <input type="checkbox"/> Bed & Breakfast | <input type="checkbox"/> Convenience Store |
| <input type="checkbox"/> School Cafeteria | <input type="checkbox"/> Other |



ALL ANVIL EQUIPMENT COMES WITH A TWO YEAR WARRANTY ON COMPONENTS AND DEFECTIVE WORKMANSHIP.

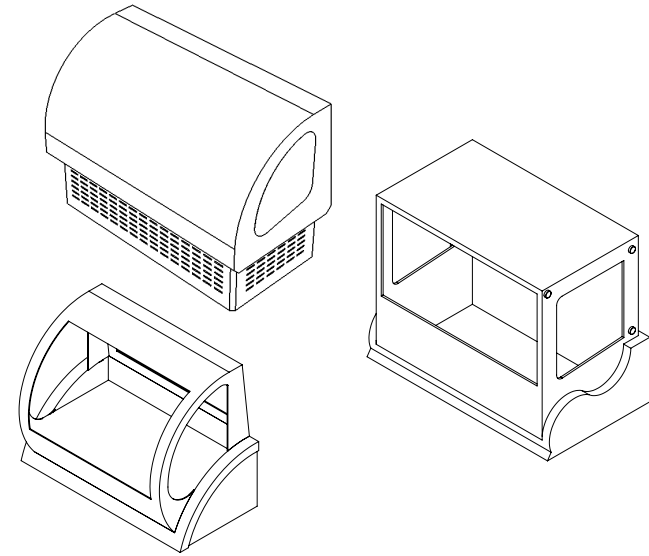
www.anvilworld.com

LIMITED WARRANTY

All equipment which is sold under ANVIL trademark and used for commercial purposes is warranted against defects in materials and workmanship. The warranty runs for two year from the date of original installation and is for the benefit of the original purchaser only. All other Warranties ,expressed or implied , statutory or otherwise, including without limitations any implied Warranty of Merchantability or fitness for purpose are excluded .The Seller shall in no event be liable for direct,indirect or consequential damages in connection with ANVIL commercial products.

The Sellers obligation under this Warranty is limited to the repair of defects without charge. Defective units must be taken or shipped,transportation charges prepaid,to ANVIL.

This Warranty is not effective if damage occurs because of accident,carelessness,improper installation,lack of proper set-up,supervision when required or if the equipment is installed or operated in any manner contrary to the installation and operating instructions. In these cases,repairs will be made at a reasonable cost. Work performed by unauthorized personnel or unauthorized service agencies voids this Warranty.



NB:

REGISTER ON-LINE TODAY

Register your warranty on-line now at www.anvilworld.com

NO WEB ACCESS

If you do not have access to the Web. Kindly register by completing the warranty registration form and fax it to the ANVIL office in the country of purchase.

Failure to do so will invalidate your warranty.

INSTALLATION OPERATION AND CARE OF REFRIGERATED DISPLAY CABINETS

**MODEL: DFC1900,DFC2200,DFC2500
DFC4900,DFC4200,DFC4500
DCA0901, DCA1201, DCA1501
DCA1901, DCA2201, DCA2501
DFC4900-120V**

UNPACKING

Unpack the product and check for any damage incurred during transit. This should be reported to the responsible carrier, railway or postal authority, and a request for a damage report should be made.

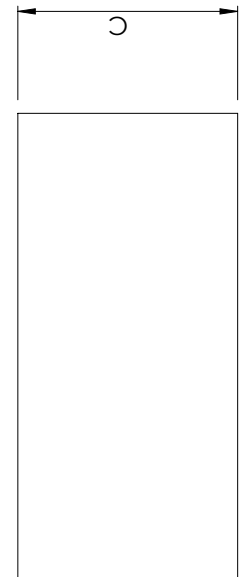
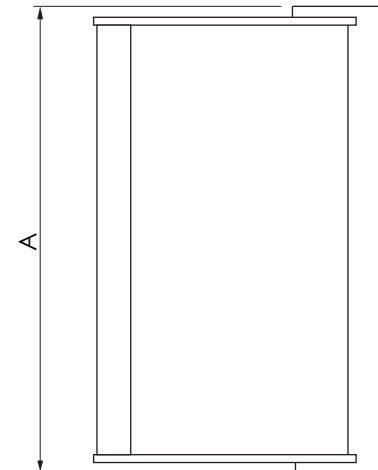
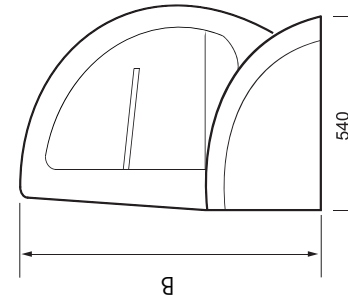


THESE INSTRUCTIONS MUST BE FOLLOWED FOR US TO GUARANTEE OUR FULL SUPPORT OF YOUR CLAIM FOR PROTECTING AGAINST LOSS FROM CONCEALED DAMAGE. THE FORM FOR FILING SUCH A CLAIM WILL BE PROVIDED BY THE CARRIER.

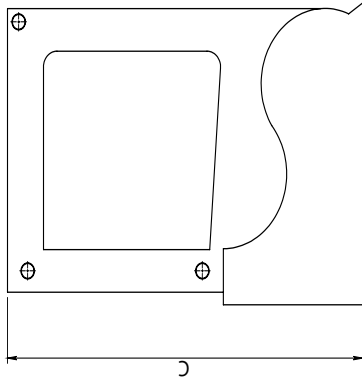
GENERAL INSTALLATION AND OPERATION INSTRUCTIONS:

The ANVIL Refrigerated Display cabinets are designed for illuminated display of food products at temperatures between +2° + 8° C. The cooling system ensures that the products placed inside can be stored at the correct temperature.

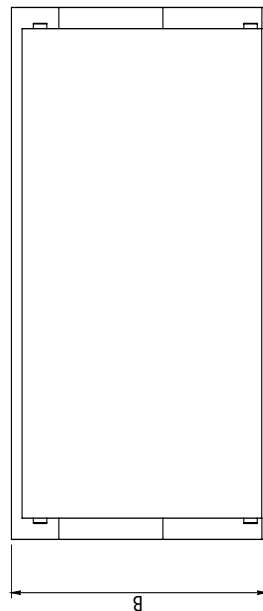
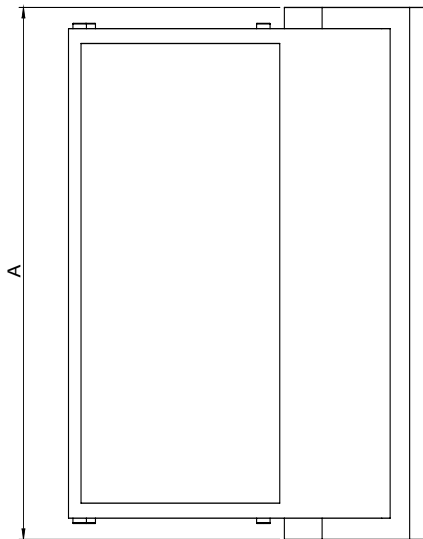
1. IF THE UNIT HAS BEEN TRANSPORTED IN A NON-VERTICAL POSITION ALLOW AT LEAST 1 HOUR FOR THE FOR THE OIL TO FLOW BACK INTO THE COMPRESSOR AFTER FINAL INSTALLATION BEFORE SWITCHING ON
2. Assemble the shelving system and rear doors.
3. Remove all the protective film from exposed stainless steel parts and surfaces.
3. The unit is designed for food display. Clean carefully before using by following the specific cleaning instructions detailed later in this manual.
4. Plug the unit into a suitable power source as detailed later in this manual.
5. The unit is provided with a digital control panel for switching on and off as well as temperature setting. See the operating instruction on page 2 for details.
6. The interior lights can be operated by using the lighting button located below the digital control.



PRODUCT CODE	A	B	C
DCA0901	900mm (36")	540 (21,26")	785 (31.10")
DCA1201	1200mm (48")	540 (21,26")	785 (31.10")
DCA1501	1500mm (60")	540 (21,26")	785 (31.10")



PRODUCT CODE	A	B	C
DFC4900	900mm (36")	540 (21,26")	790 (31,10")
DFC4200	1200mm (48")	540 (21,26")	790 (31,10")
DFC4500	1500mm (60")	540 (21,26")	790 (31,10")
DCA1901	900mm (36")	540 (21,26")	940 (37")
DCA2201	1200mm (48")	540 (21,26")	940 (37")
DCA2501	1500mm (60")	540 (21,26")	940 (37")



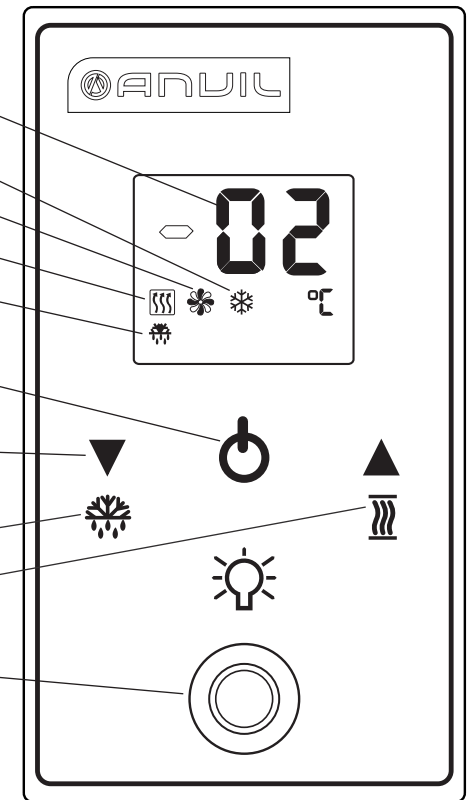
Dimensions mm (inches)

- The DFC1900/2500 units can be either placed on a suitable work surface or can be fitted into a Countertop.
- If the units are to be fitted into a Countertop please ensure that the cut out details are observed. It is essential that good ventilation is maintained by ensuring that the cut out details are STRICTLY adhered to.



SPECIFIC OPERATING INSTRUCTIONS

The following are the specific operating instructions to set the temperature controller. It is advisable not to reset the controller frequently.



- Digital temperature Display
- Cooling indicator
- Fan run indicator
- Demist indicator
- Defrost indicator
- On / Off push button
- Up and Down push buttons
- Defrost symbol
- Demist symbol
- Light switch button



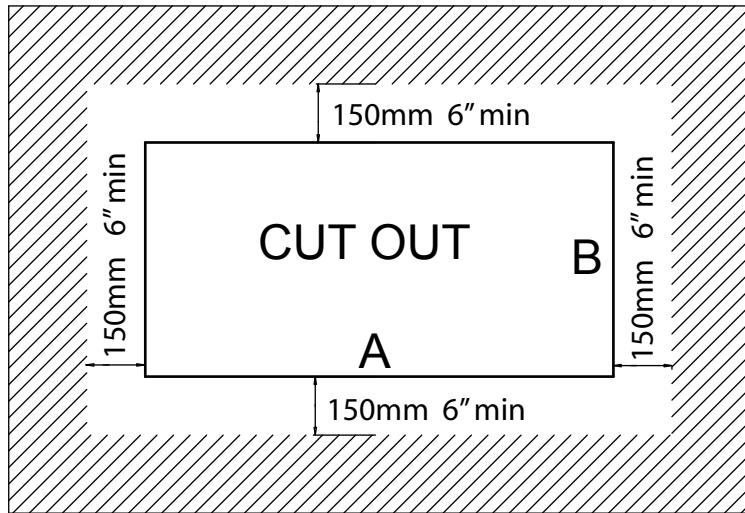
CONTROL PANEL

- Press the  button for 3 seconds to switch on the controller.
- To set the temperature, press  for 1 second. The numerals will flash on the display. Adjust the temperature value up or down using the arrow buttons, the value will be stored automatically after 6 seconds.

CONTROL PANEL Cont.

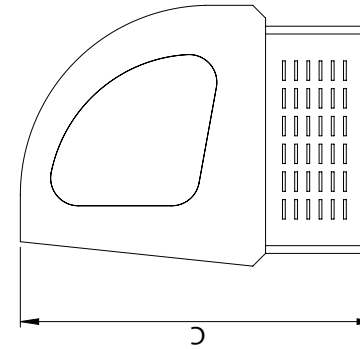
3. The unit will start cooling after 3 minutes. The range is effective from +2°C to 20°C.
4. The unit has a preset defrost cycle of every 6 hrs for a 20 minute duration.
5. Manual defrosting can be initiated by pressing the  arrow for 3 seconds. The defrost symbol will illuminate on the digital display. The defrost mode can be exited by pressing the  arrow for 3 seconds.

WORKTOP CUT OUT



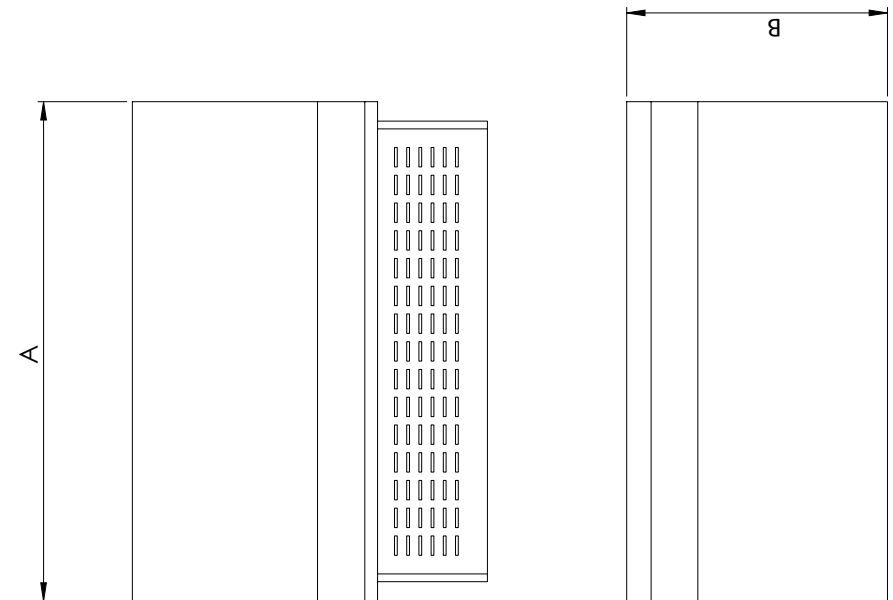
MODEL	A mm	B mm
DFC1900	850	430
DFC2200	1150	430
DFC2500	1450	430

IT IS ESSENTIAL THAT THE CABINET BELOW THE CUT OUT IS WELL VENTILATED.
 POOR VENTILATION WILL EFFECT THE PERFORMANCE OF THE UNIT

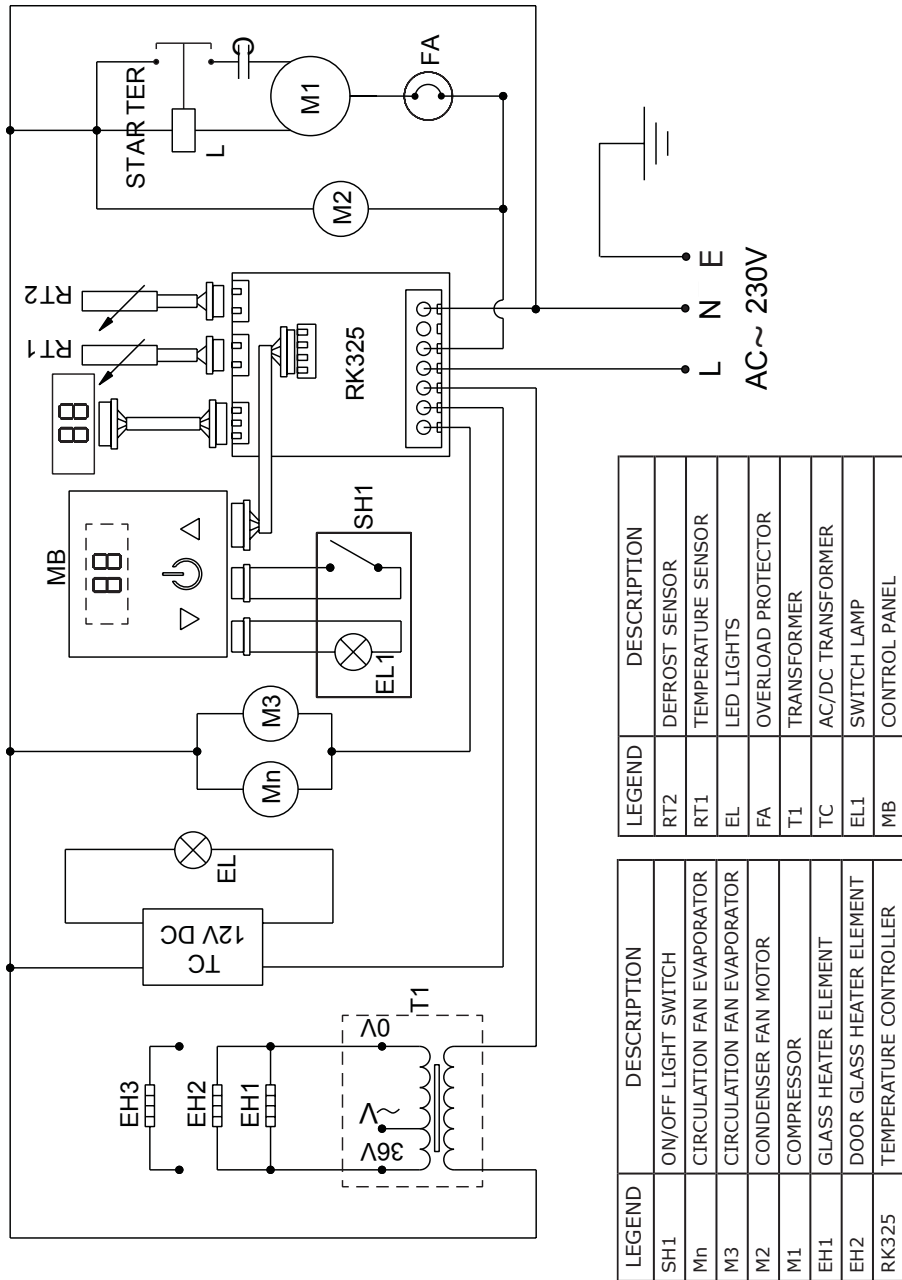


PRODUCT CODE	A	B	C
DFC1900	900mm (36")	470mm (18.50")	680mm (26.77")
DFC2200	1200mm (48")	470mm (18.50")	680mm (26.77")
DFC2500	1500mm (60")	470mm (18.50")	680mm (26.77")

(Dimensions mm (inches))



**WIRING DIAGRAM
DISPLAY UNITS REFRIGERATED**



CLEANING

- 1) It is advisable to clean the interior of the machine as often as possible to maintain good hygiene standards.
- 2) Always ensure that the unit is disconnected from the main power supply before cleaning.
- 3) Do not use abrasive powders or solvents to clean this unit.
- 4) The unit should be cleaned with warm soapy water. Use only a damp cloth.
- 5) Dry the unit carefully with a cloth before turning back on.
- 6) **IT IS ESSENTIAL THAT THE COOLING CONDENSER AND FILTER IS CLEANED ON A REGULAR BASIS TO ENSURE OPTIMUM PERFORMANCE OF THE UNIT. THE CONDENSER IS ACCESSIBLE BY REMOVING THE PANEL ADJACENT TO THE CONTROLLER. SEE INSTRUCTIONS ON THE REAR OF THE UNIT. CLEAN CAREFULLY WITH A SUITABLE SOFT BRUSH OR COMPRESSED AIR IF POSSIBLE.**

THE UNIT SHOULD NEVER BE CLEANED USING A WATER JET OR SIMILAR PRESSURE CLEANING DEVICE.



WARNING

Electric Shock Hazard.

Keep water and other liquids from entering the inside of the equipment. Liquid inside the equipment could cause an electrical shock

Do not spray water or cleaning products. Liquid could contact the electrical components and cause a short circuit or an electrical shock.
Do not use equipment if power cord is damaged or has been modified

SAFETY

READ ALL INSTRUCTIONS BEFORE USE. FAILURE TO FOLLOW THESE PRECAUTIONS COULD RESULT IN INJURY TO YOURSELF AND OTHERS

1. The units are designed to operate on alternating current only (A.C.). DO NOT CONNECT TO DIRECT CURRENT (D.C.).
2. Ensure that the power supply cord does not come into contact with hot surfaces.
3. If the supply cord is damaged, it must be replaced with a new cord assembly available from the suppliers agent.
4. Do not use the unit in a dusty environment or in an explosive atmosphere.
5. This unit is designed for indoor use only
6. BASIC SAFETY RULES
 - a. Do not touch the unit when hands and feet are wet
 - b. Do not use the unit when bare foot
 - c. The unit should never be used by children or untrained personnel
 - d. Do not pull on the electrical cord when unplugging the machine.

DESCRIPTION OF MODELS

MODEL	DESCRIPTION	CAPACITY	VOLTAGE (V/Hz)	POWER (WATTS)
DFC1900	Ref. Display unit 900mm	70L	230/50	385
DFC2200	Ref. Display unit 1200mm	94L	230/50	530
DFC2500	Ref. Display unit 1500mm	118L	230/50	540
DFC4900	Ref. Display unit 900mm	140L	230/50	420
DFC4900-120V	Ref. Display unit 900mm	140L	120V/60	420
DFC4200	Ref. Display unit 1200mm	190L	230/50	465
DFC4500	Ref. Display unit 1500mm	240L	230/50	550
DCA0901	Ref. Display unit 900mm	115L	230/50	420
DCA1201	Ref. Display unit 1200mm	155L	230/50	550
DCA1501	Ref. Display unit 1500mm	200L	230/50	570
DCA1901	Ref. Display unit 900mm	192	230/50	510
DCA2201	Ref. Display unit 1200mm	260	230/50	910
DCA2501	Ref. Display unit 1500mm	330L	230/50	990