



ANVIL

Installation, Operation and Care Manual

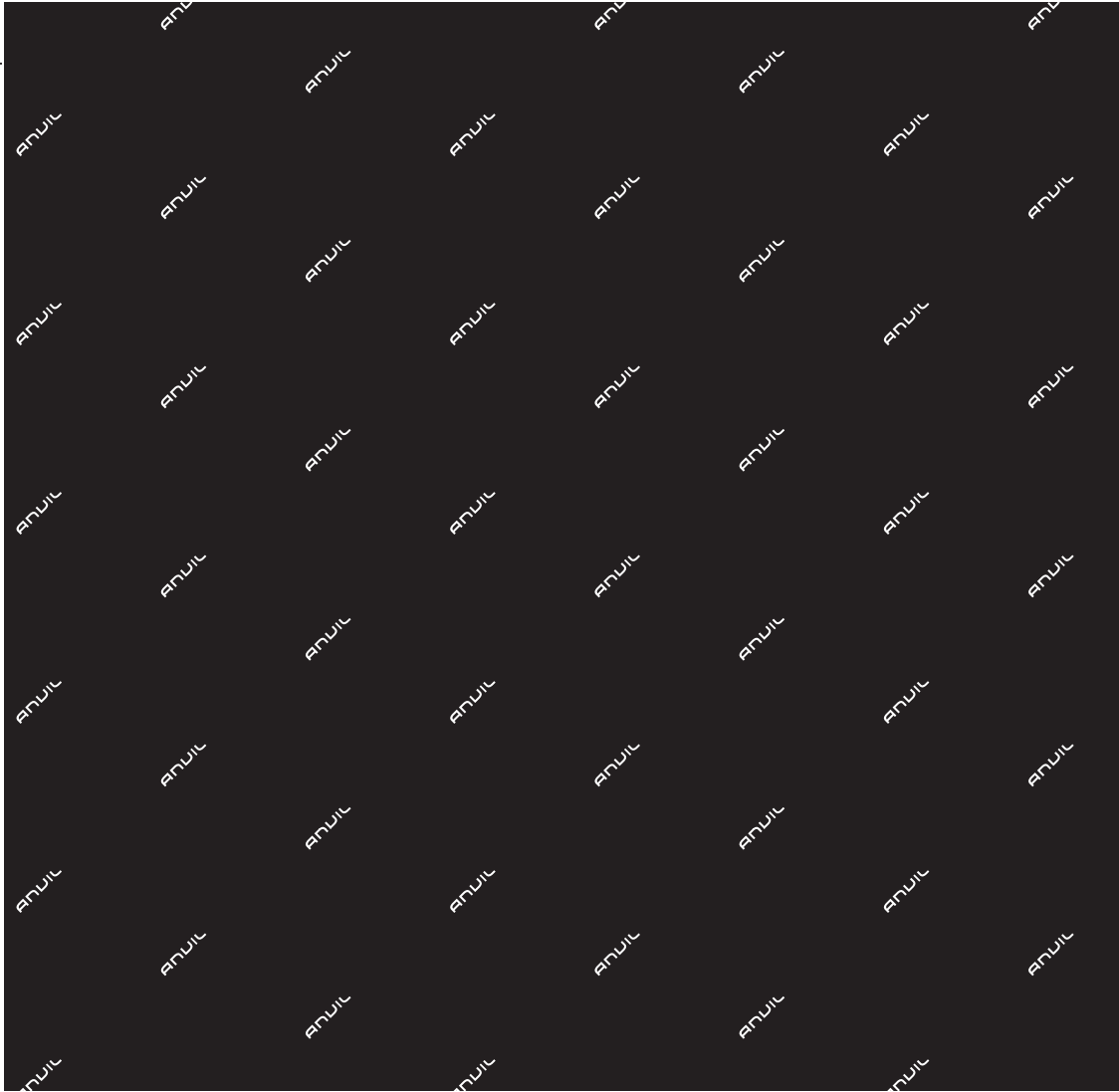


SCAN ME
TO GO TO
WARRANTY
REGISTRATION

MANUFACTURING
SINCE 1966

4-INS-SAA0001

THE CHEFS COMPANION



THE CHEFS COMPANION



THANK YOU FOR PURCHASING AN ANVIL PRODUCT!



REGISTER ONLINE TODAY

Register your warranty on-line at www.anvilworld.com today and learn how to get the best out of your Anvil product, tips to care for your Anvil product for long lasting performance, exciting recipes and more.

NO WEB ACCESS?

If you do not have access to the Web, register by completing this form and faxing it to the Anvil head office in South Africa. Fax: +27 11 474 1630

ONLY COMPLETE IF YOU DO NOT HAVE WEB ACCESS

Company _____

Name _____

Surname _____

Telephone _____

Cellphone _____

Email Address _____

Country _____

Postal address _____

Anvil products purchased _____

Code (see box label) _____

Serial number (see back of machine) _____

INTENDED USE

- Full-Service restaurant
- Coffee Shop / Deli
- Fast Food Outlet
- Hotel
- Bed & Breakfast
- School Cafeteria

- Institutional Cafeteria
- Corporate Catering
- Private Use
- Franchisor
- Convenience Store
- Other

 ALL ANVIL EQUIPMENT COMES WITH A TWO YEAR WARRANTY ON COMPONENTS AND DEFECTIVE WORKMANSHIP.

www.anvilworld.com

LIMITED WARRANTY

All equipment which is sold under ANVIL trademark and used for commercial purposes is warranted against defects in materials and workmanship. The warranty runs for two years from the date of original installation and is for the benefit of the original purchaser only. All other Warranties ,expressed or implied , statutory or otherwise, including without limitations any implied Warranty of Merchantability or fitness for purpose are excluded .The Seller shall in no event be liable for direct,indirect or consequential damages in connection with ANVIL commercial products.

The Sellers obligation under this Warranty is limited to the repair of defects without charge. Defective units must be taken or shipped,transportation charges prepaid,to ANVIL.

This Warranty is not effective if damage occurs because of accident,carelessness,improper installation,lack of proper set-up,supervision when required or if the equipment is installed or operated in any manner contrary to the installation and operating instructions. In these cases,repairs will be made at a reasonable cost. Work performed by unauthorized personnel or unauthorized service agencies using non Anvil spares voids this Warranty.



NB:

REGISTER ON-LINE TODAY

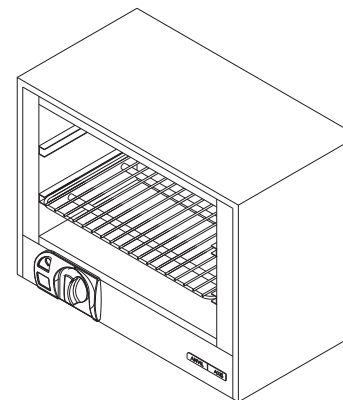
Register your warranty on-line now at www.anvilworld.com

NO WEB ACCESS

If you do not have access to the Web. Kindly register by completing the warranty registration form and fax it to the ANVIL office in the country of purchase.

Failure to do so will invalidate your warranty.

SALAMANDER



INSTALLATION OPERATION AND CARE OF SALAMANDER ELECTRIC

**MODELS: SAA0001 R01 / SAA0002 R01 / SAA0003 R01
SAA0005 R02**

UNPACKING

Unpack the product and check for any damage incurred during transit. This should be reported to the responsible carrier, railway or postal authority, and a request for a damage report should be made.



THESE INSTRUCTIONS MUST BE FOLLOWED FOR US TO GUARANTEE OUR FULL SUPPORT OF YOUR CLAIM FOR PROTECTING AGAINST LOSS FROM CONCEALED DAMAGE. THE FORM FOR FILING SUCH A CLAIM WILL BE PROVIDED BY THE CARRIER.

GENERAL INSTALLATION AND OPERATION INSTRUCTIONS

1. Place the salamander into the desired position ensuring that it is positioned at least 200mm away from the wall.
2. After initial warm up, set the energy control to the desired heat. Note that the elements will cycle on and off at heat settings less than the maximum.
3. The adjustable shelf can be raised or lowered using the special handles provided.
4. Load the shelf uniformly to prevent damage.

SAA0001/SAA0003 – 2.8kW Salamander

1. The SAA001 is fitted with 3 quartz elements. The advantage of having this type of element is a quick heat up and response time. However it is important to realize they are fragile and must not be exposed to splashing with cold water etc.
2. The SAA0003 has an Incolloy element. These units have a removable back panel such that they can act as a pass through hatch.

SAA0002 – 5Kw Salamander 2 Phase

1. The SAA0002 has 5 Quartz elements, 3 under the top lid and 2 in the middle.

SAA0005 – 30l Salamander

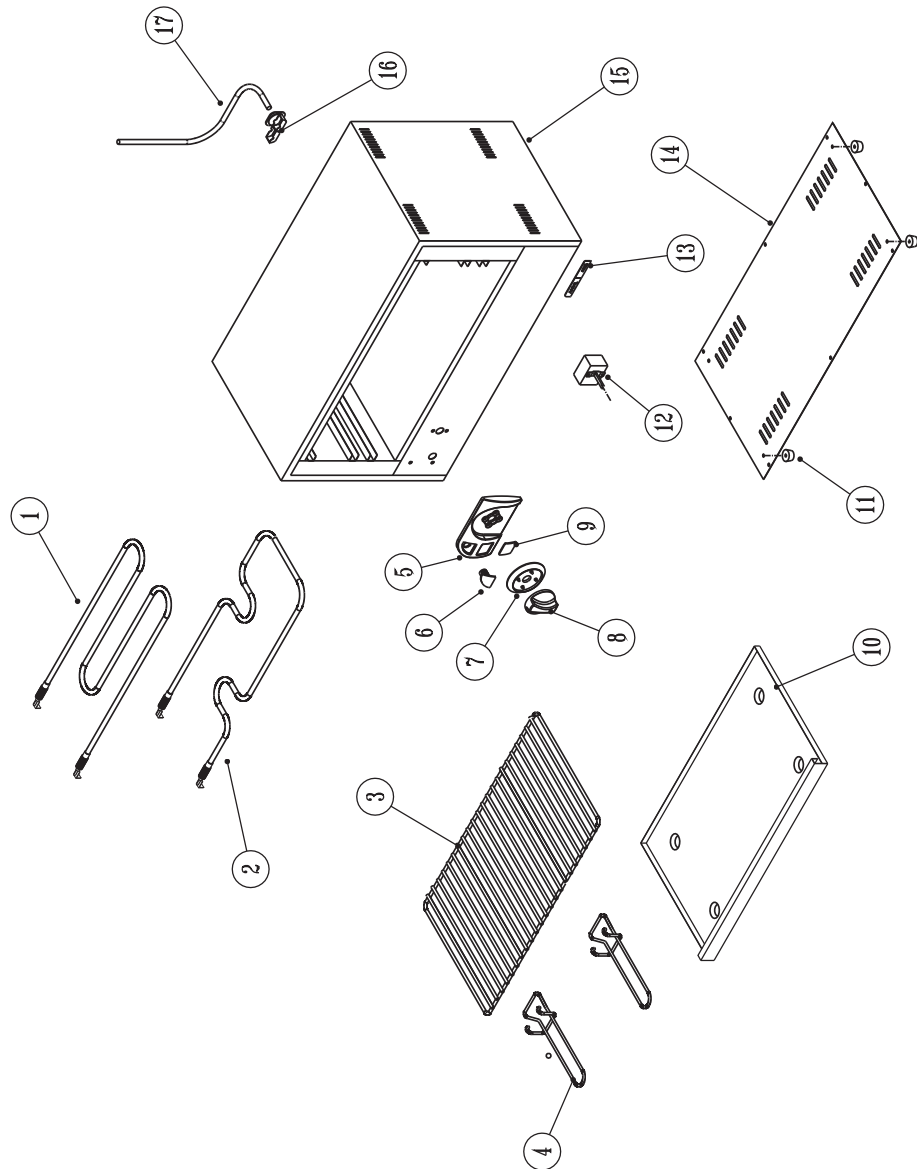
1. The SAA0005 has 2 elements, 1 under the top lid and 1 in the middle. Control for both units is via an energy control.

MODEL: 30L SALAMANDER 3KW

MODEL CODE : SAA0005 R02

Part No.	Description
1	1800W TOP ELEMENT
2	1200W BOTTOM ELEMENT
3	SALAMANDER SHELF
4	HANDLE
5	CONTROL PANEL FACIA
6	PILOT LIGHT
7	BEZEL
8	ENERGY REGULATOR KNOB
9	CONTROL PANEL INSERT
10	CRUMB TRAY
11	RUBBER FOOT
12	THERMOSTAT
13	ANVIL AXIS LOGO
14	GALVANIZED BOTTOM COVER
15	OUTER CASING
16	CABLE GRIP
17	POWER CORD

**EXPLODED DIAGRAM
30L SALAMANDER 3,0kW
MODEL: SAA0005 R02**



WARNING

Burn Hazard.

Do not touch hot food, liquid or heating surfaces while equipment is heating or operating

Hot surfaces and food can burn skin. Allow the hot surfaces to cool before handling

CLEANING AND MAINTENANCE INSTRUCTIONS

1. Always ensure that the unit is disconnected from the main power supply before cleaning.
2. The unit should not be cleaned with a water jet or immersed in water. Use only a damp cloth or sponge dipped in soapy water.
3. Always clean equipment thoroughly before first use. However, do not use chlorine or chloride – based products to clean the unit. These may lead to corrosion and pitting and will result in voiding the warranty on the unit.
4. Wipe off the unit with a dry cloth and wait at least half an hour before re – connecting to the main power outlet.



THIS APPLIANCE SHOULD NOT BE CLEANED WITH A WATER JET OR IMMERSSED IN WATER. USE ONLY A DAMP CLOTH OR SPONGE DIPPED IN SOAPY WATER. DO NOT USE STEEL-WOOL WHICH WILL MARK THE BRIGHT STAINLESS STEEL FINISH



WARNING

Electric Shock Hazard.

Keep water and other liquids from entering the inside of the equipment. Liquid inside the equipment could cause an electrical shock

Do not spray water or cleaning products. Liquid could contact the electrical components and cause a short circuit or an electrical shock. Do not use equipment if power cord is damaged or has been modified

SAFETY

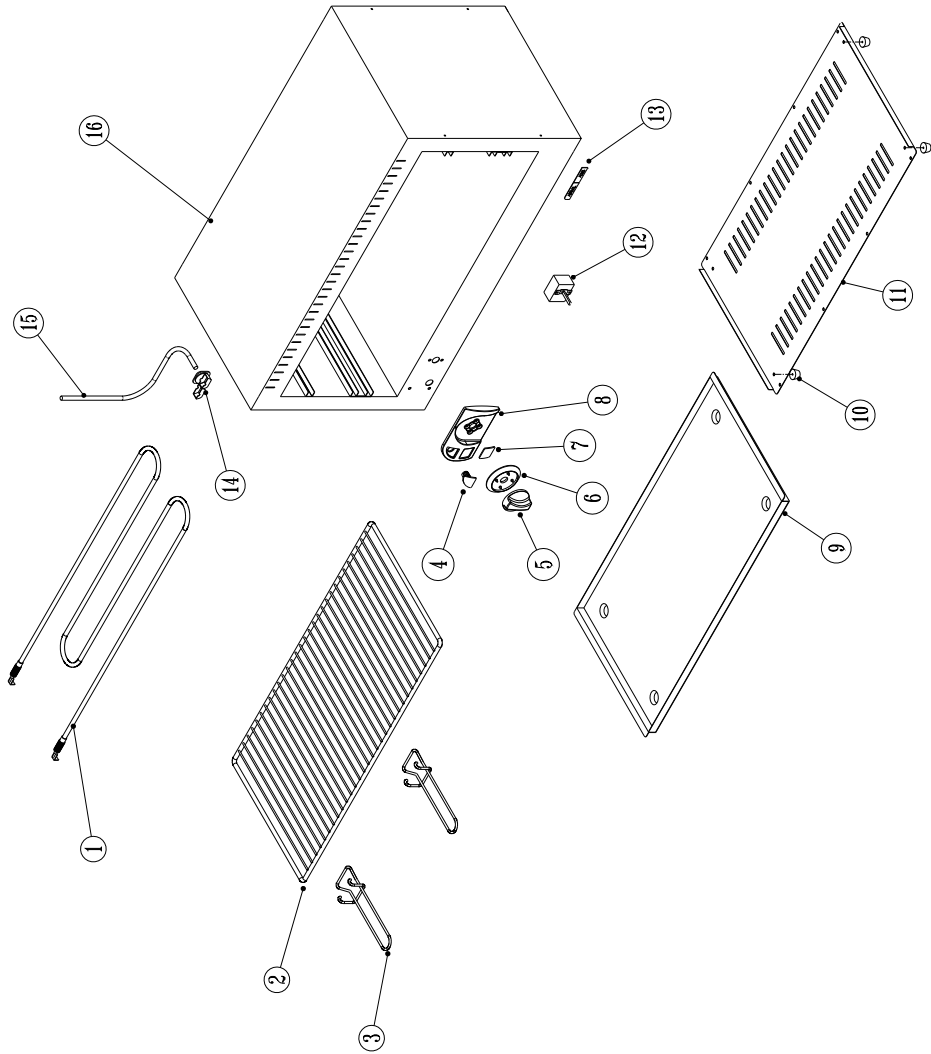
READ ALL INSTRUCTIONS BEFORE USE. FAILURE TO FOLLOW THESE PRECAUTIONS COULD RESULT IN INJURY TO YOURSELF AND OTHERS

1. When this appliance is to be positioned in close proximity to a wall, partitions, kitchen furniture, decorative finishes, etc. it is recommended that they be made of non-combustible material. If not, they shall be clad with a suitable non-combustible heat insulating material, and the closest attention be paid to fire prevention regulations.
2. Use the appliances on an individual 15A mains outlet only.
DO NOT OVERLOAD THE CIRCUIT.
3. Ensure that the equipment and the power supply cord does not come into contact with hot surfaces.
4. Supervision is necessary when the appliance is used in close proximity to children.
5. If the supply cord is damaged, it must be replaced with a new cord assembly available from the suppliers agent.
6. Use only earthed outlets matching the serial plate voltage.
7. Have equipment installed by a qualified personnel in accordance with local codes and ordinances.
8. Use equipment in a flat level position.
9. Do not operate unattended
10. The equipment may be hot, even though the pilot light is not on.
11. Do not operate if equipment has been damaged or is malfunctioning in any way.
12. These appliances are designed to run only on alternating current (A.C.) **DO NOT CONNECT TO DIRECT CURRENT (D.C)**

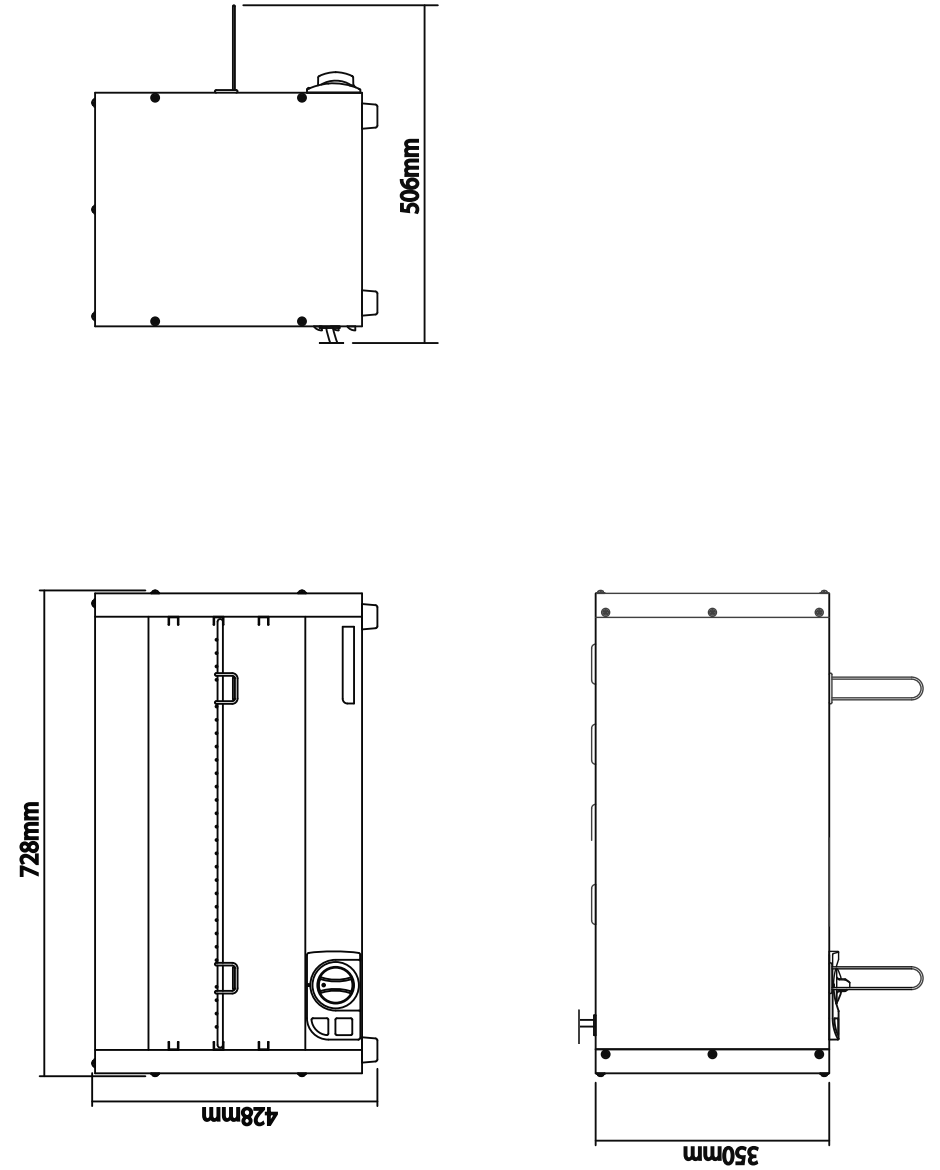
MODEL: INCOLLOY SALAMANDER MODEL CODE : SAA0003 R01

Part No.	Description
1	3KW INCOLLOY ELEMENT
2	SALAMANDER SHELF
3	BOTTOM ELEMENT
4	PILOT LIGHT
5	ENERGY REGULATOR KNOB
6	BEZEL
7	CONTROL PANEL INSERT
8	CONTROL PANEL FACIA
9	CRUMB TRAY
10	LARGE RUBBER FEET
11	BOTTOM COVER PLATE
12	ENERGY REGULATOR
13	ANVIL AXIS LOGO
14	CAGLE GLAND
15	POWER CORD
16	BODY COMPLETE

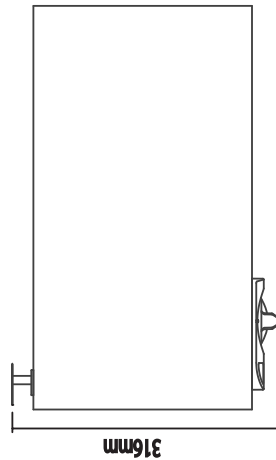
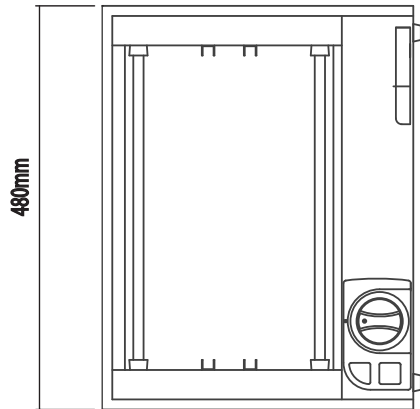
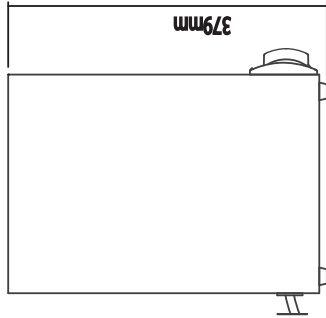
**EXPLODED DIAGRAM
INCOLLOY SALAMANDER
MODEL: SAA0003 R01**



**POSITIONING DIAGRAM
SALAMANDERS
MODELS: SAA0001 R01/SAA0002 R01/SAA0003 R01**



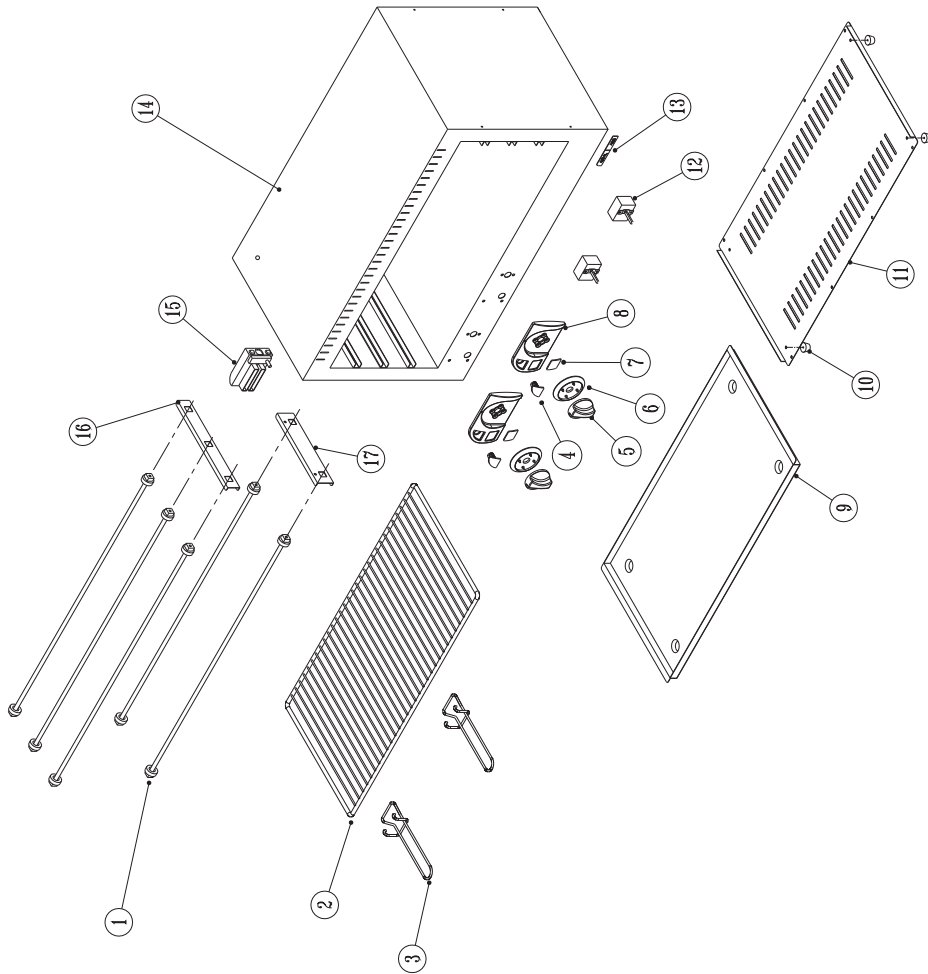
**POSITIONING DIAGRAM
SALAMANDER
MODEL: SAA0005 R01**



**MODEL: 2 PHASE SALAMANDER 5KW
MODEL CODE : SAA0002 R01**

Part No.	Description
1	ELEMENTS QUARTZ ELEMENT 1KW
2	SALAMANDER SHELF
3	BOTTOM ELEMENT
4	PILOT LIGHT
5	ENERGY REGULATOR KNOB
6	BEZEL
7	CONTROL PANEL INSERT
8	CONTROL PANEL FACIA
9	CRUMB TRAY
10	LARGE RUBBER FEET
11	BOTTOM COVER PLATE
12	ENERGY REGULATOR
13	ANVIL AXIS LOGO
14	OUTER ENCLOSURE
15	3 PHASE CONNECTOR BLOCK
16	ELEMENT SUPPORT BRACKET
17	ELEMENT SUPPORT BRACKET

**EXPLODED DIAGRAM
2 PHASE SALAMANDER 5kW
MODEL: SAA0002 R01**



ELECTRICAL CONNECTION INFORMATION

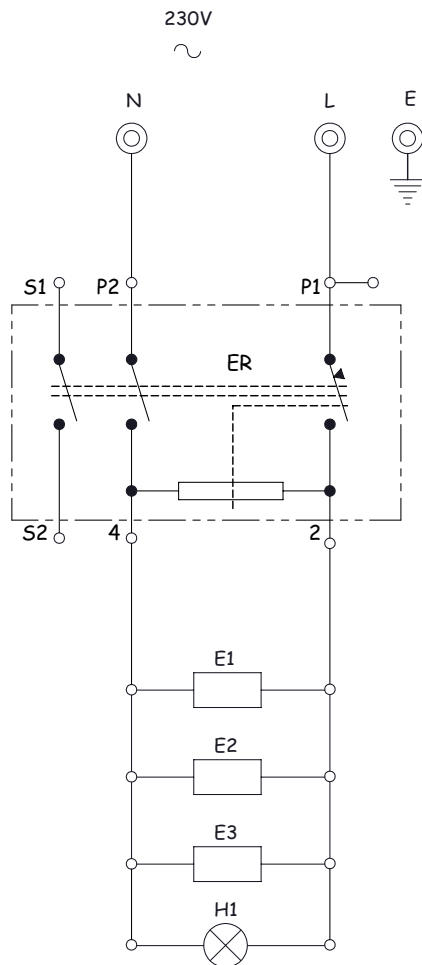
MODEL	DESCRIPTION	VOLTS (V/Hz)	POWER (W)
SAA0001	QUARTZ SALAMANDER 3kW	230/50	3000
SAA0002	2 PHASE SALAMANDER 5kW	230/50	5000
SAA0003	INCOLLOY SALAMANDER	230/50	3000
SAA0005	30LT SALAMANDER	230/50	3000



IT IS ESSENTIAL TO MAKE SURE THAT THE INCOMING VOLTAGE IS THE SAME AS THE RATED VOLTAGE OF THE OF THE UNIT AS FOUND ON THE SERIAL PLATE. THE SERIAL PLATE IS LOCATED AT THE REAR OF THE UNIT ADJACENT TO THE INCOMING CABLE ENTRY.

WIRING DIAGRAM
QUARTZ SALAMANDER 3kW
MODEL CODE: SAA0001 R01

LEGEND	DESCRIPTION	PART NUMBER
ER	ENERGY REGULATOR	1-ER-URS0012
E1/E2/E3	ELEMENT - 1000W/230V	5-SALAM-QZ
H1	CONTROL PILOT LIGHT	1-PL-BMA0001

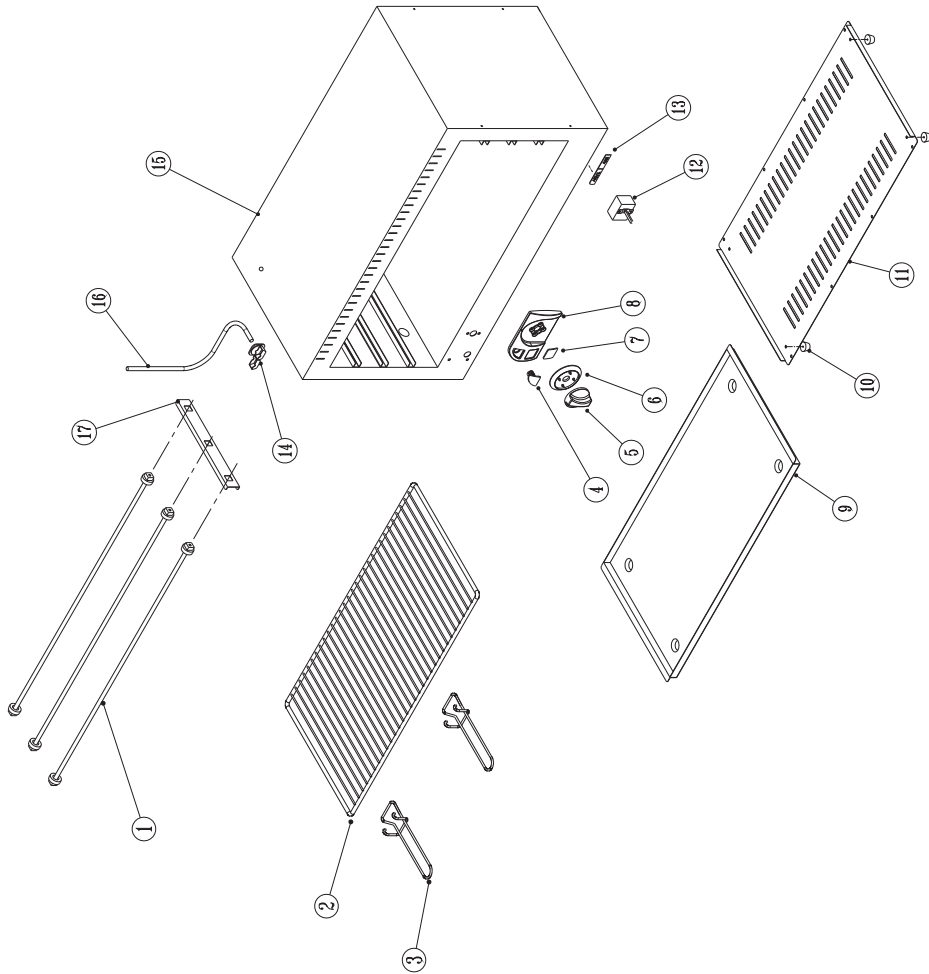


MODEL: QUARTZ SALAMANDER 3KW
MODEL CODE : SAA0001 R01

Part No.	Description
1	ELEMENTS QUARTZ 1KW
2	SALAMANDER SHELF
3	BOTTOM ELEMENT
4	PILOT LIGHT
5	ENERGY REGULATOR KNOB
6	BEZEL
7	CONTROL PANEL INSERT
8	CONTROL PANEL FACIA
9	CRUMB TRAY
10	LARGE RUBBER FEET
11	BOTTOM COVER PLATE
12	ENERGY REGULATOR
13	ANVIL AXIS LOGO
14	CABLE GRIP
15	POWER CORD
16	OUTER ENCLOSURE
17	ELEMENT SUPPORT BRACKETS

**EXPLODED DIAGRAM
QUARTZ SALAMANDER
MODEL: SAA0001 R01**

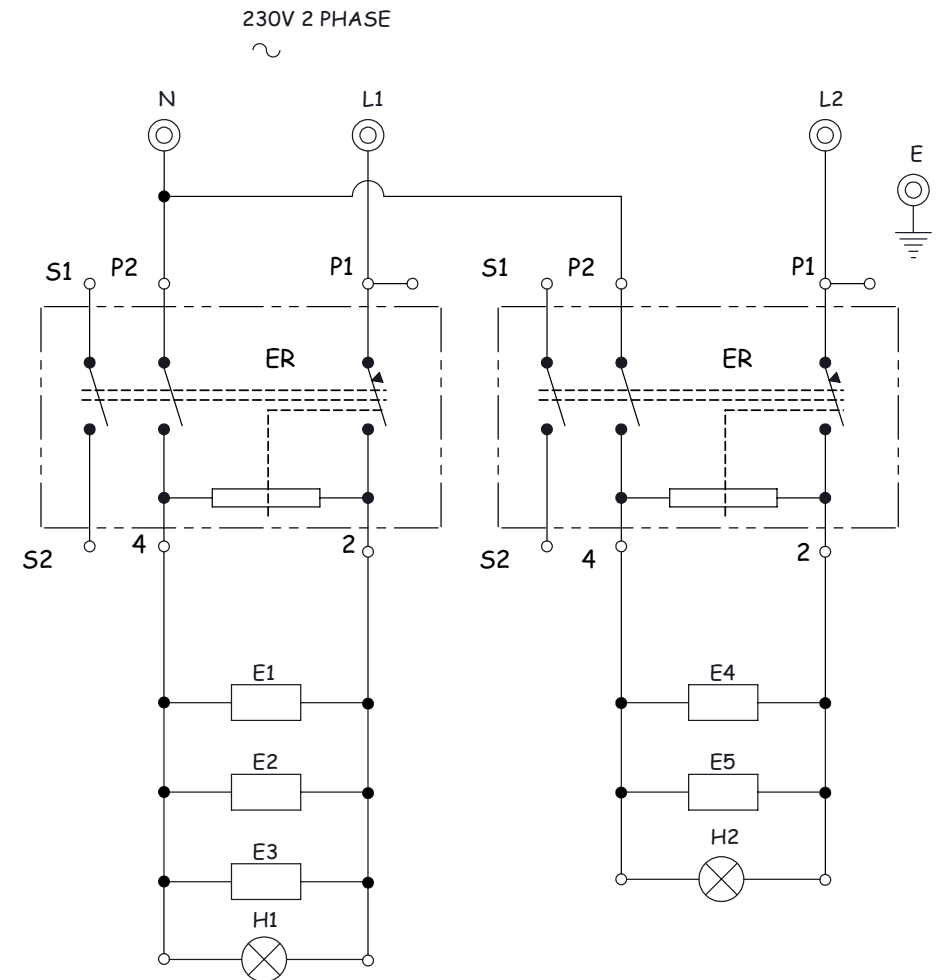
12



**WIRING DIAGRAM
2PHASE SALAMANDER
MODEL CODE: SAA0002 R01**

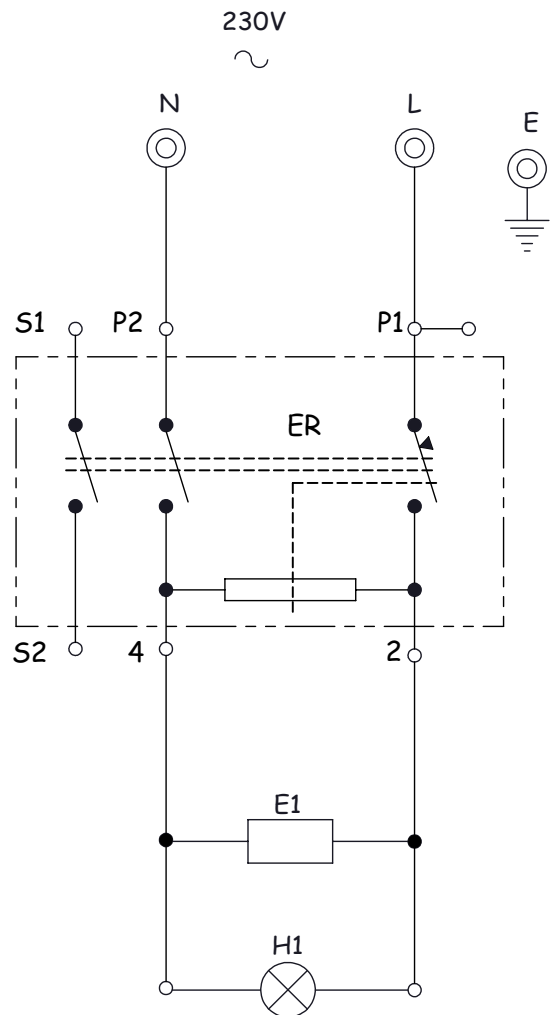
9

LEGEND	DESCRIPTION	PART NUMBER
ER	ENERGY REGULATOR	1-ER-URS0012
E1/E2/E3/E4/E5	ELEMENT - 1000W/230V	5-SALAM-QZ
H1/H2	CONTROL PILOT LIGHT	1-PL-BMA0001



LEGEND	DESCRIPTION	PART NUMBER
ER	ENERGY REGULATOR	1-ER-URS0012
E1	ELEMENT - 2800W/230V	5-2800W-CM-USA
H1	CONTROL PILOT LIGHT	1-PL-BMA0001

**WIRING DIAGRAM
INCOLLOY SALAMANDER
MODEL CODE: SAA0003 R01**



LEGEND	DESCRIPTION	PART NUMBER
ER	ENERGY REGULATOR	1-ER-URS0012
E1	ELEMENT - 1800W/230V	5-1800W-SAA0005
E2	ELEMENT - 1200W/230V	5-1200W-SAA0005
H1	CONTROL PILOT LIGHT	1-PL-BMA0001

**WIRING DIAGRAM
30L SALAMANDER 3,0kW
MODEL CODE: SAA0005 R02**

