



ANVIL

Installation, Operation and Care Manual



SCAN ME
TO GO TO
WARRANTY
REGISTRATION

MANUFACTURING
SINCE 1966

4-INS-WMW1380

THE CHEFS COMPANION



THE CHEFS COMPANION



THANK YOU FOR PURCHASING AN ANVIL PRODUCT!



REGISTER ONLINE TODAY

Register your warranty on-line at www.anvilworld.com today and learn how to get the best out of your Anvil product, tips to care for your Anvil product for long lasting performance, exciting recipes and more.

NO WEB ACCESS?

If you do not have access to the Web, register by completing this form and faxing it to the Anvil head office in South Africa. Fax: +27 11 474 1630

ONLY COMPLETE IF YOU DO NOT HAVE WEB ACCESS

Company _____

Name _____

Surname _____

Telephone _____

Cellphone _____

Email Address _____

Country _____

Postal address _____

Anvil products purchased _____

Code (see box label) _____

Serial number (see back of machine) _____

INTENDED USE

- Full-Service restaurant
- Coffee Shop / Deli
- Fast Food Outlet
- Hotel
- Bed & Breakfast
- School Cafeteria

- Institutional Cafeteria
- Corporate Catering
- Private Use
- Franchisor
- Convenience Store
- Other

 ALL ANVIL EQUIPMENT COMES WITH A TWO YEAR WARRANTY ON COMPONENTS AND DEFECTIVE WORKMANSHIP.

www.anvilworld.com

LIMITED WARRANTY

All equipment which is sold under ANVIL trademark and used for commercial purposes is warranted against defects in materials and workmanship. The warranty runs for two years from the date of original installation and is for the benefit of the original purchaser only. All other Warranties ,expressed or implied , statutory or otherwise, including without limitations any implied Warranty of Merchantability or fitness for purpose are excluded .The Seller shall in no event be liable for direct,indirect or consequential damages in connection with ANVIL commercial products.

The Sellers obligation under this Warranty is limited to the repair of defects without charge. Defective units must be taken or shipped,transportation charges prepaid,to ANVIL.

This Warranty is not effective if damage occurs because of accident,carelessness,improper installation,lack of proper set-up,supervision when required or if the equipment is installed or operated in any manner contrary to the installation and operating instructions. In these cases,repairs will be made at a reasonable cost. Work performed by unauthorized personnel or unauthorized service agencies using non Anvil spares voids this Warranty.



NB:

REGISTER ON-LINE TODAY

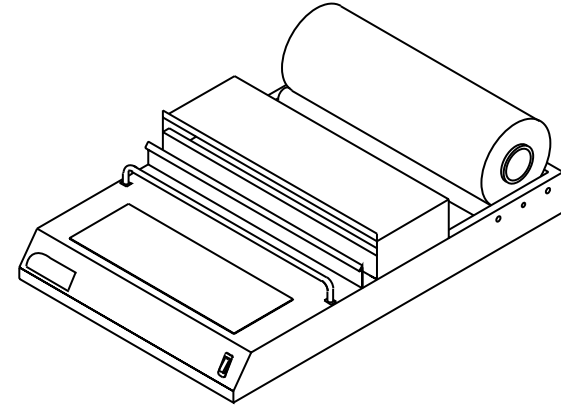
Register your warranty on-line now at www.anvilworld.com

NO WEB ACCESS

If you do not have access to the Web. Kindly register by completing the warranty registration form and fax it to the ANVIL office in the country of purchase.

Failure to do so will invalidate your warranty.

WRAPPING MACHINE



INSTALLATION OPERATION AND CARE OF WRAPPING MACHINE ELECTRIC

**MODEL: WMW1380 R01/WMW1500 R01
WMW4500 R01/WMW4380 R01**

**WMW1380-120 R01/WMW1500-120 R01
WMW4500-120 R01/WMW4380-120 R01**

UNPACKING

Unpack the product and check for any damage incurred during transit. This should be reported to the responsible carrier, railway or postal authority, and a request for a damage report should be made.



THESE INSTRUCTIONS MUST BE FOLLOWED FOR US TO GUARANTEE OUR FULL SUPPORT OF YOUR CLAIM FOR PROTECTING AGAINST LOSS FROM CONCEALED DAMAGE. THE FORM FOR FILING SUCH A CLAIM WILL BE PROVIDED BY THE CARRIER.

GENERAL INSTALLATION AND OPERATION INSTRUCTIONS

1. Select desired width of shrink-wrap plastic and place as indicated in Diagram A on the rear rollers.
2. Feed shrink-wrap plastic through the wrapping plate also as indicated in Diagram A.
3. Cover item to be wrapped as indicated in Diagram B.
4. Cut plastic on Teflon heating bar as indicated in Diagram C and place completed wrapped item onto heating plate for a few seconds for final sealing.
5. The side adjusting knob (D) has been provided to increase or decrease the roller tension as desired. This will compensate for the reduction in shrink-wrap weight as the roll reduces.

MODEL: WRAPPING MACHINE

MODEL CODE : WMW4380 R02

Part No.	Description
1	TEFLON COATED WRAPBAR
2	HIGH BAR ANGLE
3	STAINLESS STEEL HEAT PAD SHIELD
4	HEATING PAD ELEMENT
5	1.5MM ASB MILLBOARD INSULATION
6	NON ILLUMINATED ROCKER SWITCH
7	ANVIL AXIS LOGO
8	SMALL RUBBER FEET
9	WRAPPING MACHINE CHASSIS
10	380MM SWIVEL BOX
11	GALVANISED BOTTOM COVER
12	LOCKING KNOB
13	END CAPS FOR ROLLER AXLE
14	NYLON BEARING BUSH
15	CABLE GRIP
16	POWER CORD
17	ROLLER AXLE
18	ROLLER

**EXPLODED DIAGRAM DIAGRAM
WRAPPING MACHINE 380mm
MODEL CODE: WMW4380 R02**

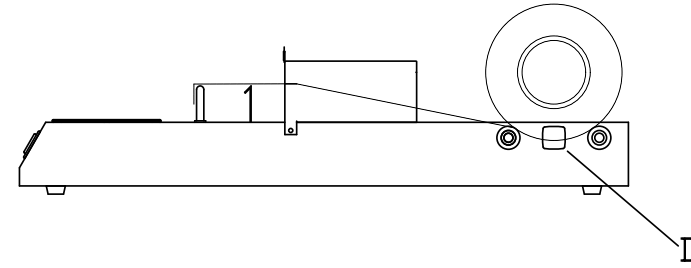
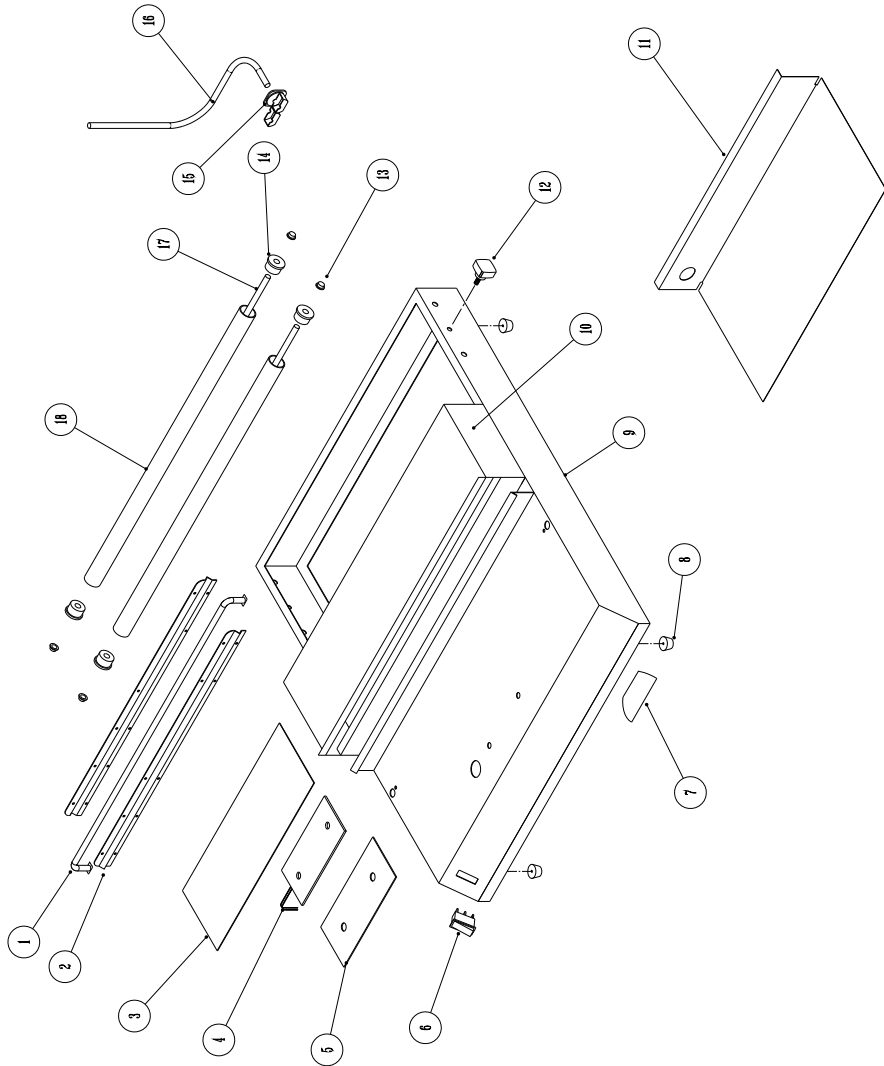


DIAGRAM A

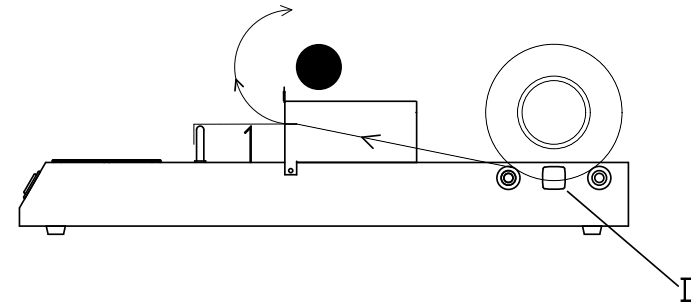


DIAGRAM B

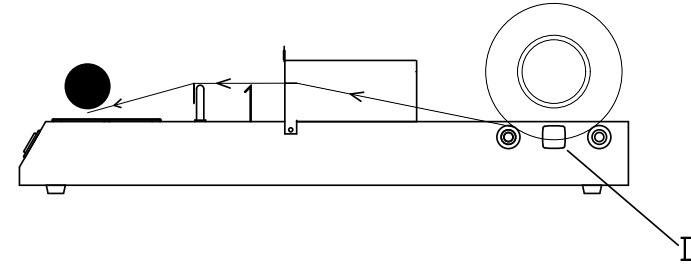


DIAGRAM C



WARNING

Burn Hazard.

Do not touch hot food, liquid or heating surfaces while equipment is heating or operating

Hot surfaces and food can burn skin. Allow the hot surfaces to cool before handling

CLEANING

1. Always ensure that the unit is disconnected from the mains power supply before cleaning
2. This appliance should not be cleaned with a water jet or immersed in water. Use only a damp cloth or sponge dipped in soapy water.
3. Wipe off the unit with a dry cloth and wait at least half an hour before re - connecting to the mains outlet.



THIS APPLIANCE SHOULD NOT BE CLEANED WITH A WATER JET OR IMMERSSED IN WATER. USE ONLY A DAMP CLOTH OR SPONGE DIPPED IN SOAPY WATER. DO NOT USE STEEL-WOOL WHICH WILL MARK THE BRIGHT STAINLESS STEEL FINISH



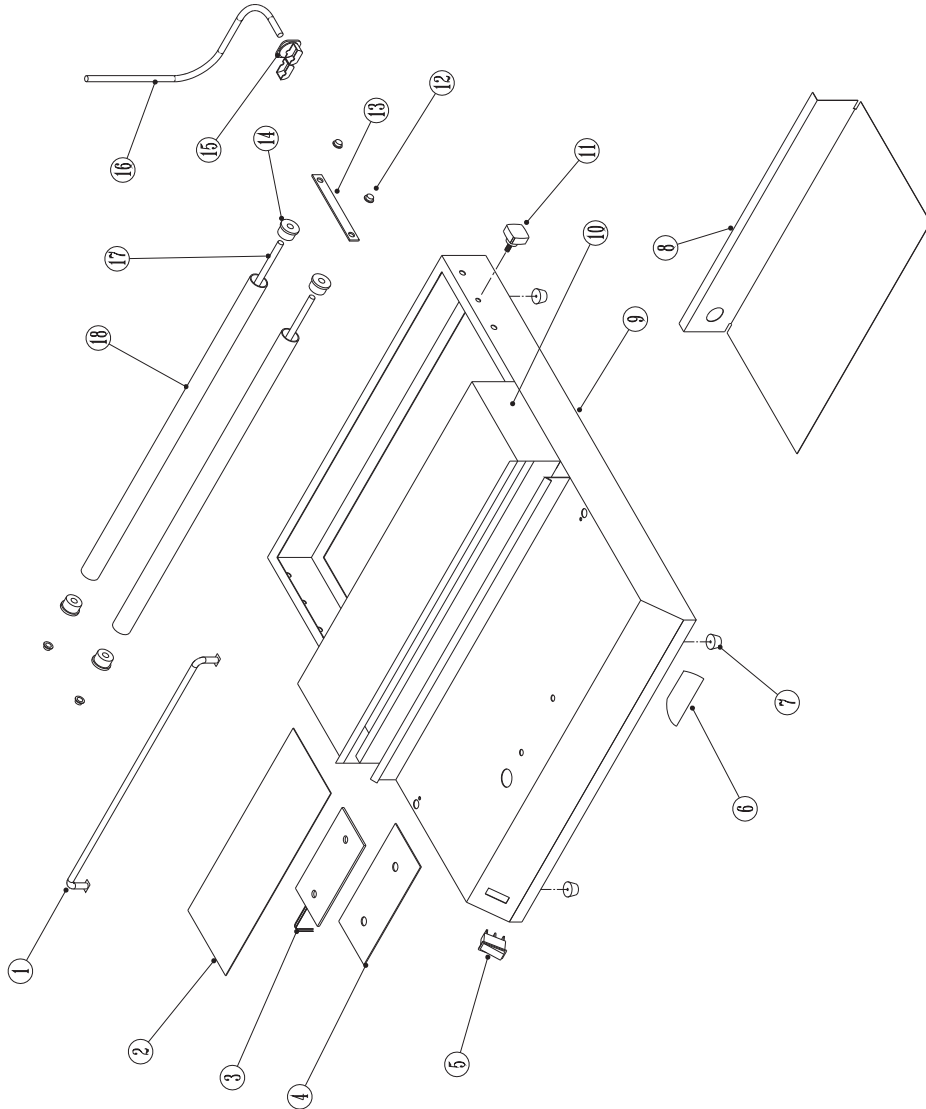
THE ENCAPSULATED PAD ELEMENT IS NOT SPLASH PROOF. DO NOT SPRAY WITH WATER OR ANY OTHER FLUID AS THIS WILL DAMAGE THE ELEMENT AND INVALIDATE THE WARRANTY

MODEL: WRAPPING MACHINE 500MM

MODEL CODE : WMW1500 R02

Part No.	Description
1	TEFLON COATED WRAPBAR FOR 500MM MACHINE
2	STAINLESS STEEL HEAT PAD SHIELD
3	HEATING PAD ELEMENT
4	1.5MM ASB MILLBOARD INSULATION
5	ILLUMINATED ROCKER SWITCH
6	ANVIL AXIS LOGO
7	SMALL RUBBER FEET
8	GALVANISED CONTROL COVER
9	WRAPPING MACHINE CHASSIS
10	CLING WRAP GUIDE
11	LOCKING KNOB
12	END CAPS FOR ROLLER AXLE
13	ROLLER CLAMPING PLATE
14	NYLON BEARING BUSH
15	CABLE GRIP
16	POWER CORD
17	ROLLER AXLE
18	CHROME TUBE FOR 500MM ROLLER

**EXPLODED DIAGRAM DIAGRAM
WRAPPING MACHINE 500mm
MODEL CODE: WMW1500 R02**



WARNING

Electric Shock Hazard.

Keep water and other liquids from entering the inside of the equipment. Liquid inside the equipment could cause an electrical shock

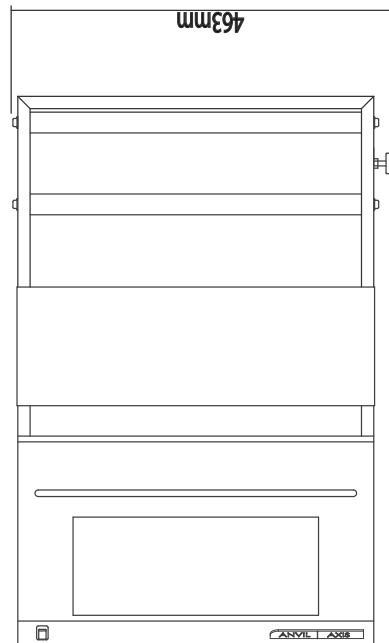
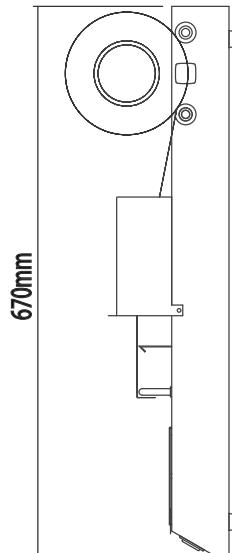
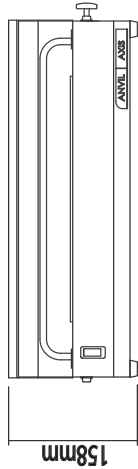
Do not spray water or cleaning products. Liquid could contact the electrical components and cause a short circuit or an electrical shock. Do not use equipment if power cord is damaged or has been modified

SAFETY

READ ALL INSTRUCTIONS BEFORE USE. FAILURE TO FOLLOW THESE PRECAUTIONS COULD RESULT IN INJURY TO YOURSELF AND OTHERS

1. When this appliances is to be positioned in close proximity to a wall, partitions, kitchen furniture, decorative finishes, etc. it is recommended that they be made of non-combustible material. If not, they shall be clad with a suitable non-combustible heat insulating material, and the closest attention be paid to fire prevention regulations.
2. Use the appliances on an individual 15A mains outlet only.
DO NOT OVERLOAD THE CIRCUIT.
3. Ensure that the equipment and the power supply cord does not come into contact with hot surfaces.
4. Supervision is necessary when the appliance is used in close proximity to children.
5. If the supply cord is damaged, it must be replaced with a new cord assembly available from the suppliers agent.
6. Use only earthed outlets matching the serial plate voltage.
7. Have equipment installed by a qualified personnel in accordance with local codes and ordinances.
8. Use equipment in a flat level position.
9. Do not operate unattended
10. Do not operate if equipment has been damaged or is malfunctioning in any way.
11. These appliances are designed to run only on alternating current (A.C.) **DO NOT CONNECT TO DIRECT CURRENT (D.C)**

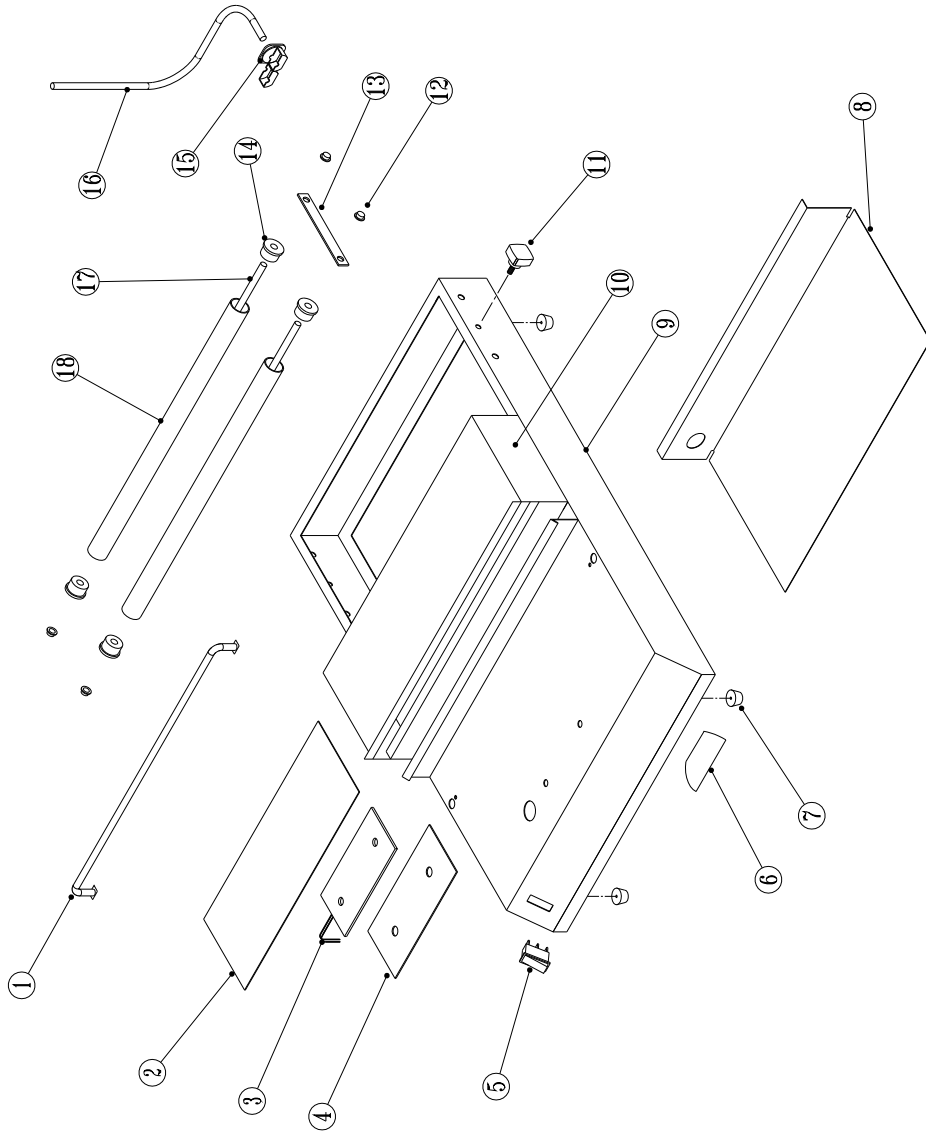
**POSITIONING DIAGRAM
WRAPPING MACHINE
MODEL: WMW1380 R01/WMW4380 R01**



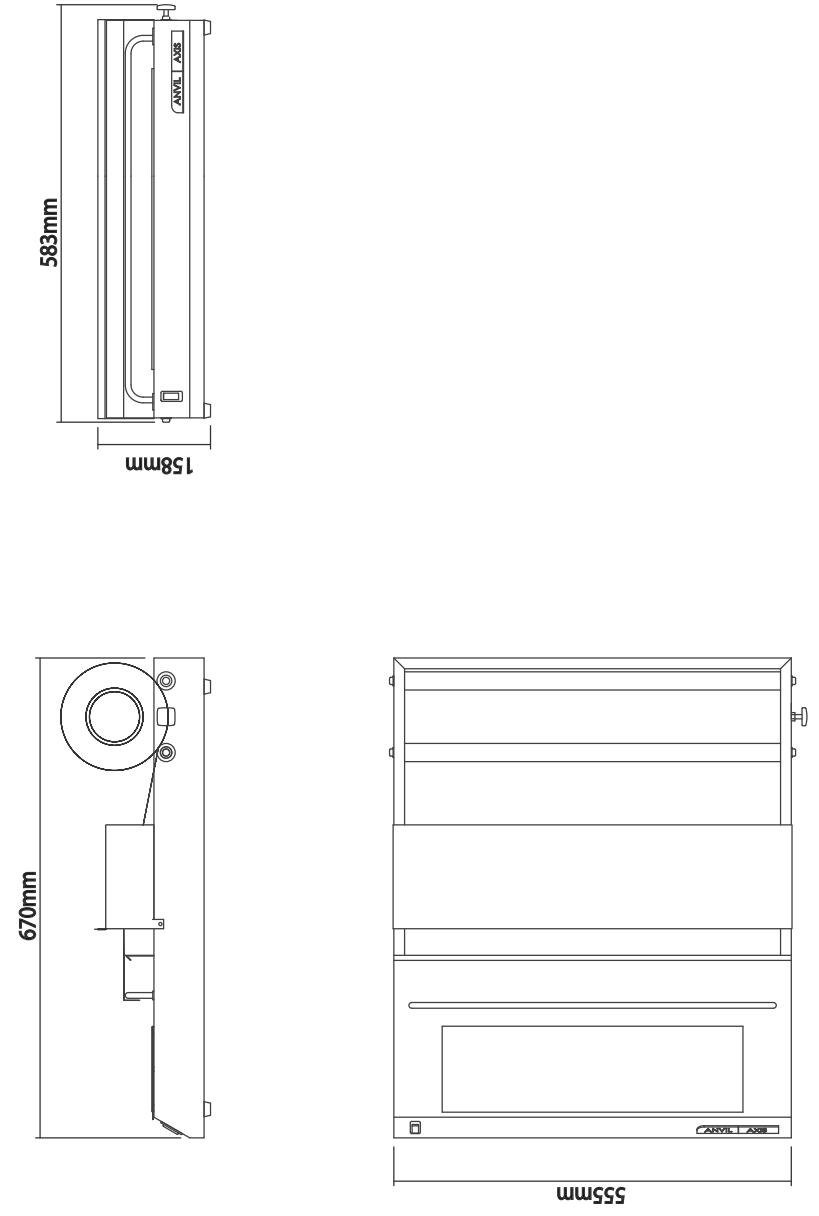
**MODEL: WRAPPING MACHINE 380MM
MODEL CODE : WMW1380 R01**

Part No.	Description
1	TEFLON COATED WRAPBAR
2	STAINLESS STEEL HEAT PAD SHIELD
3	HEATING PAD ELEMENT
4	1.5MM ASB MILLBOARD INSULATION
5	NON ILLUMINATED ROCKER SWITCH
6	ANVIL AXIS LOGO
7	SMALL RUBBER FEET
8	GALVANISED BOTTOM COVER
9	WRAPPING MACHINE CHASSIS
10	380MM SWIVEL BOX
11	LOCKING KNOB
12	END CAPS FOR ROLLER AXLE
13	ROLLER CLAMPING PLATE
14	NYLON BEARING BUSH
15	CABLE GRIP
16	POWER CORD
17	ROLLER AXLE
18	ROLLER

**EXPLODED DIAGRAM DIAGRAM
WRAPPING MACHINE 380mm
MODEL CODE: WMW1380 R01**



**POSITIONING DIAGRAM
WRAPPING MACHINE
MODEL: WMW1500 R01/ WMW4500 R01**



ELECTRICAL CONNECTION INFORMATION

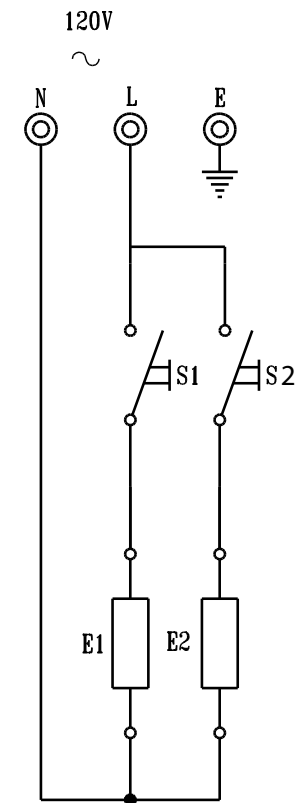
MODEL	DESCRIPTION	VOLTS (V/Hz)	POWER (W)
WMW1380	STAINLESS STEEL 380 mm	230/50	175
WMW1380-120	STAINLESS STEEL 380 mm	120/60	175
WMW4380	HIGH BAR STAINLESS STEEL	230/50	175
WMW4380-120	HIGH BAR STAINLESS STEEL	120/60	175
WMW1500	STAINLESS STEEL 500 mm	230/50	210
WMW1500-120	STAINLESS STEEL 500 mm	120/60	210
WMW4500	HIGH BAR STAINLESS STEEL	230/50	210
WMW4500-120	HIGH BAR STAINLESS STEEL	120/60	210



IT IS ESSENTIAL TO MAKE SURE THAT THE INCOMING VOLTAGE IS THE SAME AS THE RATED VOLTAGE OF THE OF THE UNIT AS FOUND ON THE SERIAL PLATE. THE SERIAL PLATE IS LOCATED AT THE REAR OF THE UNIT ADJACENT TO THE INCOMING CABLE ENTRY.

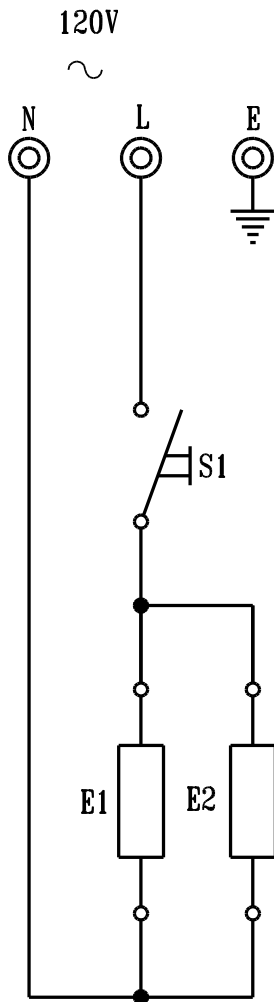
WIRING DIAGRAM WRAPPING MACHINE MODEL CODE: WMW4500-DUAL SWITCH

LEGEND	DESCRIPTION	PART NUMBER
S1/S2	NON ILLUMINATED MAINS ROCKER SWITCH	1-RS-NI
E1	HEATING ELEMENT PAD 50W-120V	5-120V-50W-MICA
E2	BOTTOM ELEMENT 160W/120V	5-120V-160W-W-1



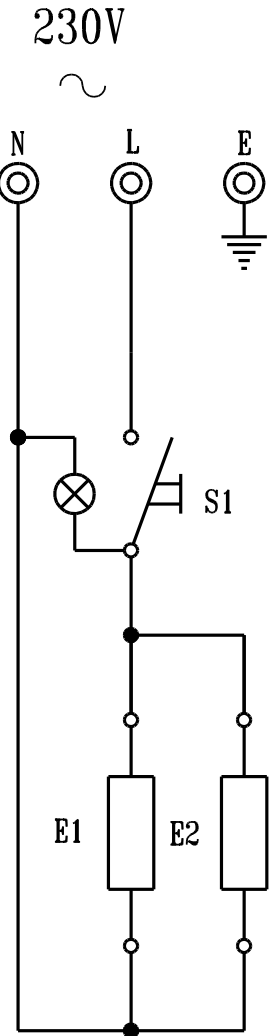
WIRING DIAGRAM
WRAPPING MACHINE
MODEL CODE: WMW1500-120 R01/WMW4500-120 R01

LEGEND	DESCRIPTION	PART NUMBER
S1	NON ILLUMINATED MAINS ROCKER SWITCH	1-RS-NI
E1	HEATING ELEMENT PAD 50W-120V	5-120V-50W-MICA
E2	BOTTOM ELEMENT 160W/120V	5-120V-160W-W-1



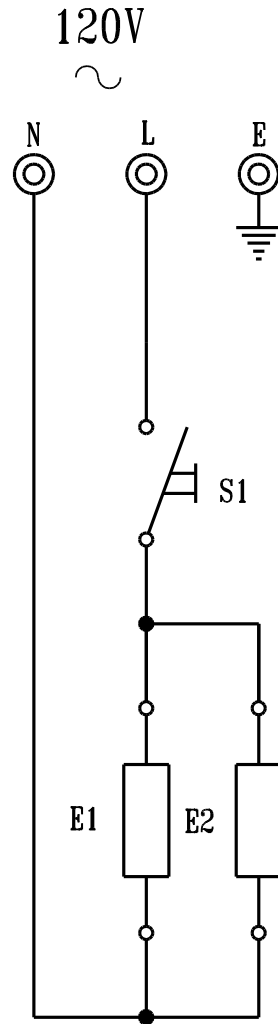
WIRING DIAGRAM
WRAPPING MACHINE
MODEL CODE: WMW1380 R01/WMW4380 R01

LEGEND	DESCRIPTION	PART NUMBER
S1	ILLUMINATED MAINS ROCKER SWITCH	1-NRS-BMA4002
E1	HEATING ELEMENT PAD 50W-230V	5-50W-MICA-ENCA
E2	BOTTOM ELEMENT 125W/230V	5-125W-WRAP-1



**WIRING DIAGRAM
WRAPPING MACHINE
MODEL CODE: WMW1380-120 R01/WMW4380-120 R01**

LEGEND	DESCRIPTION	PART NUMBER
S1	NON ILLUMINATED MAINS ROCKER SWITCH	1-NRS-NI
E1	HEATING ELEMENT PAD 50W-120V	5-120V-50W-MICA
E2	BOTTOM ELEMENT 125W/120V	5-120V-125W-W-1



**WIRING DIAGRAM
WRAPPING MACHINE
MODEL CODE: WMW1500 R01/WMW4500 R01**

LEGEND	DESCRIPTION	PART NUMBER
S1	ILLUMINATED MAINS ROCKER SWITCH	1-NRS-BMA4002
E1	HEATING ELEMENT PAD 50W-230V	5-50W-MICE-ENCA
E2	BOTTOM ELEMENT 160W/230V	5-160W-WRAPBAR-1

